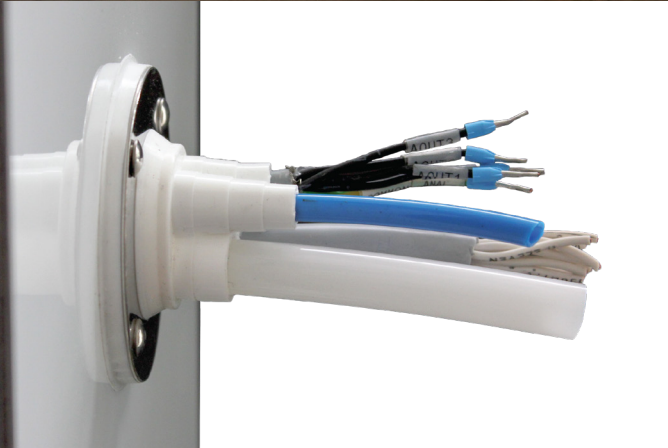
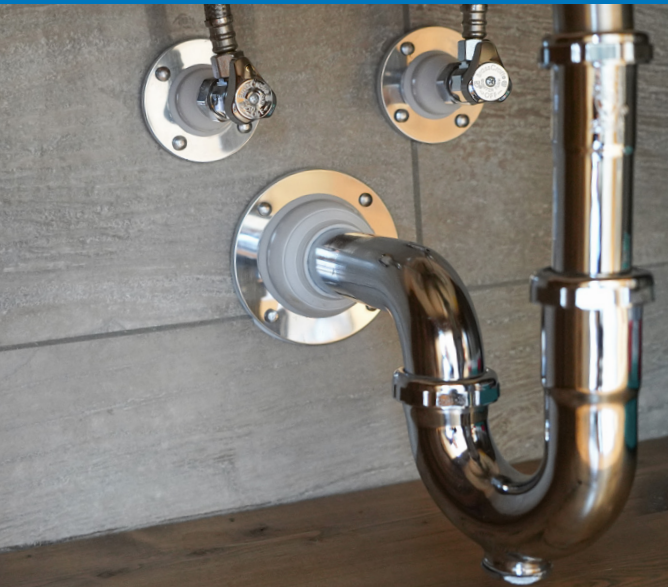




PIPETITE® APPLICATIONS



SEALING SOLUTIONS FOR PLUMBING, ELECTRICAL, IT, AND CONTRACTORS

SPECIFICATIONS

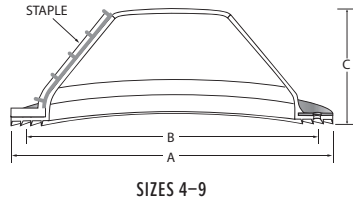
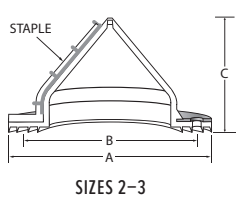
- Styles available to fit tube or pipe up to 15" in diameter
- Pipetite® Standard and Grommet are IP34 rated
- Mini Grommets are NEMA rated for type 4, type 4x, and type 6 enclosures
- Molded lines guide your cutting

MATERIALS

- Self-sealing white FDA silicone and stainless steel construction
- Temperature rated from -40–500°F
- UV resistant & accelerated corrosion tested to 150 years

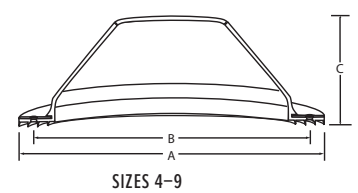
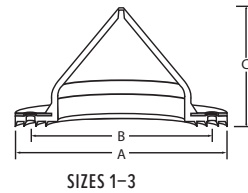
REBOOT® FOR EXISTING INSTALLATIONS						
Size	Tube OD	A	B	C	Anchors	Item
2	0.00–2.50	4.17	3.58	2.36	5	PTR2-000
3	0.00–3.74	5.79	5.04	3.07	7	PTR3-000
4	2.76–5.31	7.36	6.61	2.52	7	PTR4-000
5	3.94–7.09	9.33	8.39	3.15	10	PTR5-000
7	4.92–10.83	13.28	12.25	5.12	14	PTR7-000
9	6.50–15.00	19.31	18.39	7.87	20	PTR9-000

ALL DIMENSIONS ARE SHOWN IN INCHES. 19 GAUGE MOUNTING RING WITH 0.177 DIAMETER BOLT HOLES. SIZES 2 AND 3 ARE FULL CONES. SIZES 4 THROUGH 9 ARE NOT AVAILABLE AS FULL CONES. SIZES 7 AND 9 CAN BE USED AS STANDARD OR REBOOT. COLUMN C IS THE MAX HEIGHT.



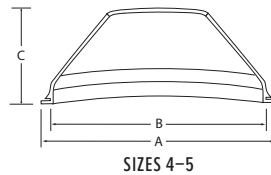
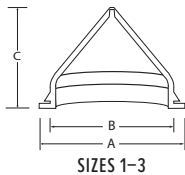
STANDARD FOR NEW INSTALLATIONS						
Size	Tube OD	A	B	C	Anchors	Item
1	0.00–1.00	2.76	2.24	2.05	4	PT1-000
2	0.00–2.50	4.17	3.58	2.36	4	PT2-000
3	0.00–3.74	5.79	5.04	3.07	6	PT3-000
4	2.76–5.31	7.36	6.61	2.52	6	PT4-000
5	3.94–7.09	9.33	8.39	3.15	10	PT5-000
7	4.92–10.83	13.28	12.25	5.12	14	PTR7-000
9	6.50–15.00	19.31	18.39	7.87	20	PTR9-000

ALL DIMENSIONS ARE SHOWN IN INCHES. 19 GAUGE MOUNTING RING WITH 0.177 DIAMETER BOLT HOLES. SIZES 1, 2, AND 3 ARE FULL CONES. SIZES 4 THROUGH 9 ARE NOT AVAILABLE AS FULL CONES. SIZES 7 AND 9 CAN BE USED AS STANDARD OR REBOOT. COLUMN C IS THE MAX HEIGHT.



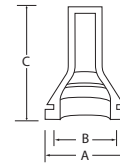
GROMMET FOR CABINETS, PANELS, AND ENCLOSURES					
Size	Tube OD	A	B	C	Item
1	0.00–1.00	1.89	1.38	2.12	PTG1-000
2	0.00–2.56	3.23	2.75	2.50	PTG2-000
3	0.00–3.74	4.72	4.00	3.25	PTG3-000
4	2.76–5.31	6.30	5.75	2.50	PTG4-000
5	3.94–7.09	7.95	7.25	3.12	PTG5-000

ALL DIMENSIONS ARE SHOWN IN INCHES. GROMMETS FIT WALL THICKNESSES FROM 18 GAUGE TO 11 GAUGE (0.048 TO 0.120 IN). SIZES 1, 2, AND 3 ARE FULL CONES. SIZES 4 AND 5 ARE NOT AVAILABLE AS FULL CONES. COLUMN C IS THE MAX HEIGHT.



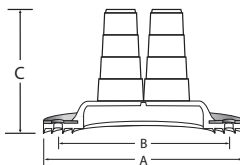
MINI GROMMET NEMA RATED FOR TYPE 4, TYPE 4X, AND TYPE 6 ENCLOSURES					
Size	Tube OD	A	B	C	Item
1	0.25	0.87	0.63	1.31	PTMG-1
2	0.31	0.87	0.63	1.25	PTMG-2
3	0.38	0.87	0.63	1.25	PTMG-3
4	0.50	0.87	0.63	1.12	PTMG-4

ALL DIMENSIONS ARE SHOWN IN INCHES. GROMMETS FIT WALL THICKNESSES FROM 18 GAUGE TO 11 GAUGE (0.048 TO 0.120 IN). COLUMN C IS THE MAX HEIGHT.



MULTI GROMMET FOR MULTI-WIRE APPLICATIONS IN CABINETS OR WALLS					
Size	Tube OD	A	B	C	Item
1	0.25–0.50	2.81	2.25	1.75	PT1-MG

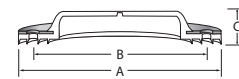
ALL DIMENSIONS ARE SHOWN IN INCHES. 19 GAUGE MOUNTING RING WITH 0.177 DIAMETER BOLT HOLES.



FLAT FOR JACKETED VESSEL INSTALLATIONS							
Size	Tube OD	A	B	C	Anchors	Item	Item-Gray
1	0.00–1.00	2.76	2.24	.37	4	PTF1-000	N/A
2*	0.00–2.50	4.17	3.58	.37	4	PTF2-000	PTF2-GRAY
3*	0.00–3.74	5.79	5.04	.37	6	PTF3-000	PTF3-GRAY
4*	0.00–5.31	7.36	6.61	.37	6	PTF4-000	PTF4-GRAY

ALL DIMENSIONS ARE SHOWN IN INCHES. BOLT HOLES ARE 0.177 INCHES IN DIAMETER. COLUMN C IS THE MAX HEIGHT.

*SIZES 2, 3, AND 4 ARE ALSO AVAILABLE IN GRAY



CSIDESIGNS.COM | 800.654.5635 | 417.831.1411 | SALES@CSIDESIGNS.COM
SPRINGFIELD, MO | DALLAS, TX | DURHAM, NC | FRESNO, CA | KNOXVILLE, TN

PIPETITE® IS PROTECTED UNDER US PATENT NUMBERS
9255412, 9206928, 9581271, 10000934, AND 10081947.
PIPETITE PLUMBING/ELECTRICAL FLYER—REV 2/20