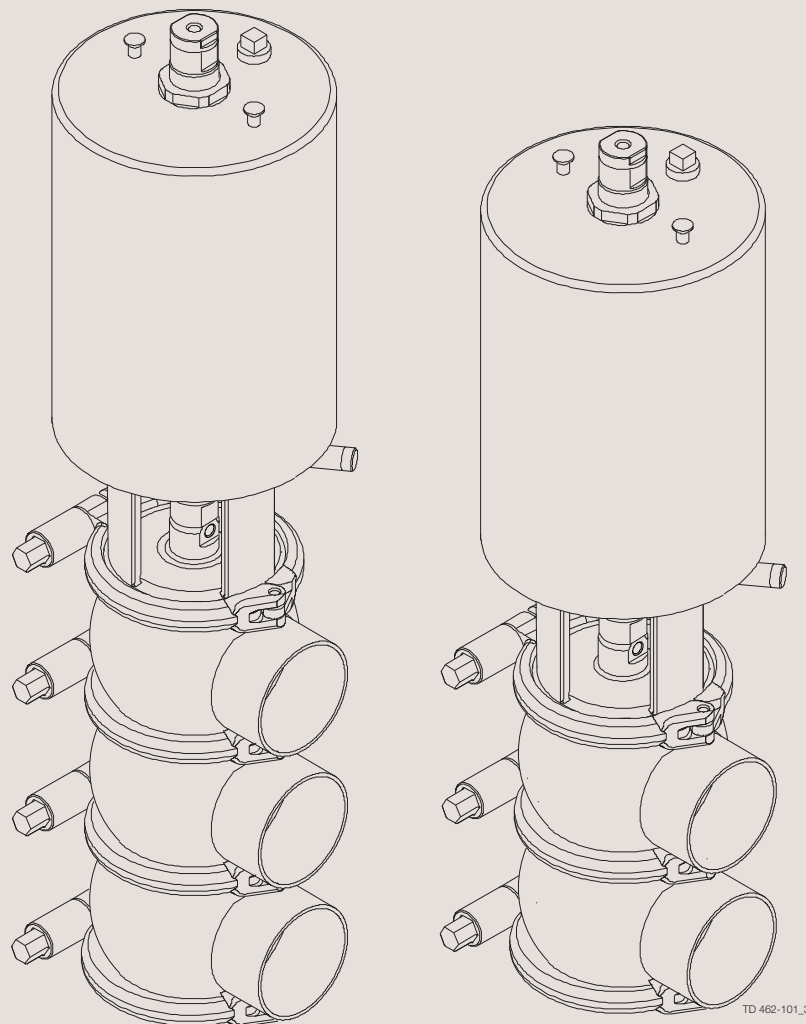


## Spare Parts

### Unique SSV- Reverse Acting



TD 462-101\_3

ESE02011-ENUS9

2020-07

Original manual



**CSI**

CONTACT CSI FOR MORE INFORMATION | [CSIDESIGNS.COM](http://CSIDESIGNS.COM) | [SALES@CSIDESIGNS.COM](mailto:SALES@CSIDESIGNS.COM) | 417.831.1411

---

*The information herein is correct at the time of issue but may be subject to change without prior notice*

- 1. Important information ..... 4
- 2. Shut-off valve - TR2 ..... 6
- 3. Change-over valve - TR2 ..... 8
- 4. Shut-off valve - elastomer plug seal ..... 10
- 5. Change-over valve - elastomer plug seal ..... 12
- 6. Mounting tool ..... 16



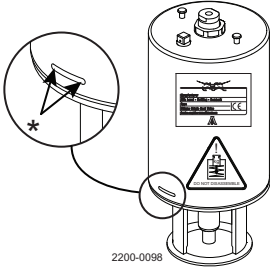
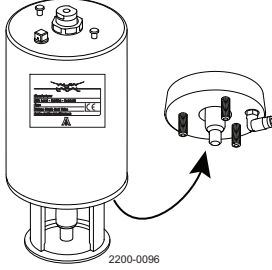
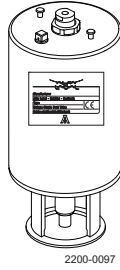
# 1 Important information

## Different actuator types for the SSV valve

In June 2016 the below change was implemented and the “removable yoke with bolts” version is thereby phased out and replaced by the “yoke without bolts” version.

### NOTE

It is important to check for warnings marked on the actuator when servicing an actuator - see below table.

<p><b>Actuator type</b></p>	<p><b>Non-maintainable actuator</b> Spring under load and <b>CANNOT</b> be opened</p>  <p>*) Lock wire opening is locked when warning is marked on actuator</p>	<p><b>Fully maintainable actuator</b> Spring cage and can be opened</p> 	<p><b>Fully maintainable actuator</b> Spring cage and can be opened</p> 
<p><b>Yoke type</b></p>	<p>Non-removable yoke</p>	<p>“Removable yoke with bolts”. If the yoke with bolts is damaged it has to be replaced by the “yoke without bolts”.</p>	<p>“Yoke without bolts”</p>
<p><b>Service</b></p>	<p>Not possible to service internally (it is not possible to change piston O-rings)</p>	<p>Yes</p>	<p>Yes</p>
<p><b>Marked with warnings</b></p>	<p>Yes</p>	<p>No</p>	<p>No</p>
<p><b>Year of production</b></p>	<p>From 2006</p>	<p>From 2006 to June 2016</p>	<p>From June 2016</p>



**CSI**

CONTACT CSI FOR MORE INFORMATION | [CSIDESIGNS.COM](http://CSIDESIGNS.COM) | [SALES@CSIDESIGNS.COM](mailto:SALES@CSIDESIGNS.COM) | 417.831.1411

## Shut-off valve - TR2

If the actuator is marked with a danger warning do **NOT** attempt to cut the actuator open.



Do **NOT** attempt to disassemble the actuator due to spring under load danger.

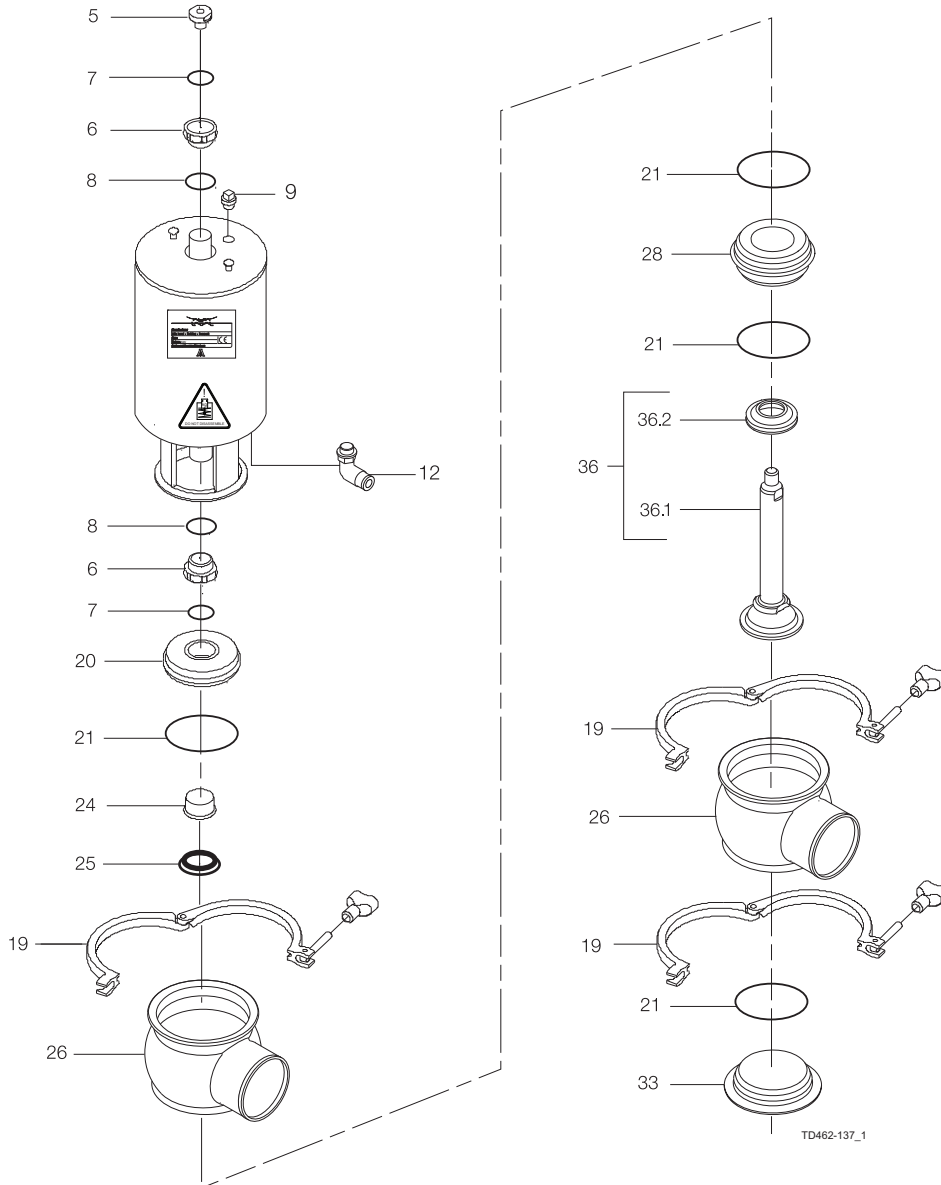


Do **NOT** attempt to cut the actuator open, due to spring under load danger.

AND



Do **NOT** attempt to cut the actuator open, due to spring under load danger.



## Shut-off valve - TR2

Pos	Qty	Denomination	1½"	2"	2½"	3"	4"
<b>Actuator</b>							
		Actuator, complete (NO-RA) .....	9613154836	9613163137	9613154838	9613154839	9613163140
		Actuator, complete (NC-RA) .....	9613154831	9613154832	9613154833	9613154834	9613154835
		Actuator, complete (A/A) .....	9613163141	9613163142	9613163143	9613163144	9613163145
5	1	Adapter, plastic (- 0115) .....					
	1	Adapter, steel (0115 - 0518) .....					
	1	Adapter, steel (0518 -) .....	9615374701	9615374701	9615374701	9615374701	9615374701
6	□	Bushing .....					
7	□	O-ring .....					
8	□	O-ring .....					
9	1	Plug .....	9613414101	9613414101	9613414101	9613414101	9613414101
12	1(2)	Air fitting .....	9611994682	9611994682	9611994682	9611994682	9611994682
<b>Clamp</b>							
19	3	Clamp .....	9612939316	9612939317	9612939318	9612939319	9612939320
<b>Bonnet</b>							
20	1	Bonnet .....	9613127102	9613127103	9613127104	9613127105	9613127106
21	◆	O-ring, EPDM (standard) .....					
	◆	O-ring, HNBR .....					
	◆	O-ring, FPM .....					
		O-ring, set (10 pcs.) EPDM .....	9614059422	9614059425	9614059428	9614059431	9614059434
		O-ring, set (10 pcs.) HNBR .....	9614059423	9614059426	9614059429	9614059432	9614059435
		O-ring, set (10 pcs.) FPM .....	9614059424	9614059427	9614059430	9614059433	9614059436
24	1	Bushing .....	9613125002	9613125002	9613125002	9613125002	9613125002
25	◆	Lip seal, EPDM (standard) .....					
	◆	Lip seal, HNBR .....					
	◆	Lip seal, FPM .....					
		Lip seal, set (10 pcs.) EPDM .....	9614059419	9614059419	9614059419	9614059419	9614059419
		Lip seal, set (10 pcs.) HNBR .....	9614059420	9614059420	9614059420	9614059420	9614059420
		Lip seal, set (10 pcs.) FPM .....	9614059421	9614059421	9614059421	9614059421	9614059421
33	1	Lower bonnet .....	9613130102	9613130103	9613130104	9613130105	9613130106
<b>Seat</b>							
28	1	Seat .....	9613127502	9613127503	9613127504	9613127505	9613127506
<b>Valve Body</b>							
26	2	Valve body, upper, 1 port, clamp .....	9613161503	9613161505	9613161507	9613161509	9613161511
	2	Valve body, upper, 2 ports, clamp .....	9613161504	9613161506	9613161508	9613161510	9613161512
	2	Valve body, upper, 1 port, welding ends .....	9613139315	9613139317	9613139319	9613139321	9613139323
	2	Valve body, upper, 2 ports, welding ends .....	9613139316	9613139318	9613139320	9613139322	9613139324
<b>Valve Plug</b>							
36	1	Plug, shut off RA, complete .....	9613160802	9613160803	9613160804	9613160805	9613160806
36.1	1	Plug, shut off RA .....	9613160701	9613160702	9613160703	9613160704	9613160705
36.2◆	1	Plug seal, PTFE .....					
		Plug seal, set (10 pcs.) PTFE .....	9614059449	9614059450	9614059451	9614059452	9614059453
			<b>1½"</b>	<b>2"</b>	<b>2½"</b>	<b>3"</b>	<b>4"</b>
□		<b>Service kit, actuator .....</b>	<b>9611926500</b>	<b>9611926500</b>	<b>9611926500</b>	<b>9611926500</b>	<b>9611926500</b>
◆		<b>Service kit, EPDM .....</b>	<b>9611926648</b>	<b>9611926649</b>	<b>9611926650</b>	<b>9611926651</b>	<b>9611926652</b>
◆		<b>Service kit, HNBR .....</b>	<b>9611926653</b>	<b>9611926654</b>	<b>9611926655</b>	<b>9611926656</b>	<b>9611926657</b>
◆		<b>Service kit, FPM .....</b>	<b>9611926658</b>	<b>9611926659</b>	<b>9611926660</b>	<b>9611926661</b>	<b>9611926662</b>

Parts marked with □ are included in the service kits (actuator).

Parts marked with ◆ are included in the service kits (product wetted parts).

Recommended spare parts: Service kits.

TD 900346/3



# Change-over valve - TR2

If the actuator is marked with a danger warning do **NOT** attempt to cut the actuator open.

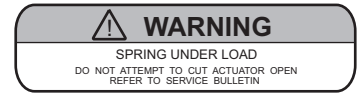


Do **NOT** attempt to disassemble the actuator due to spring under load danger.

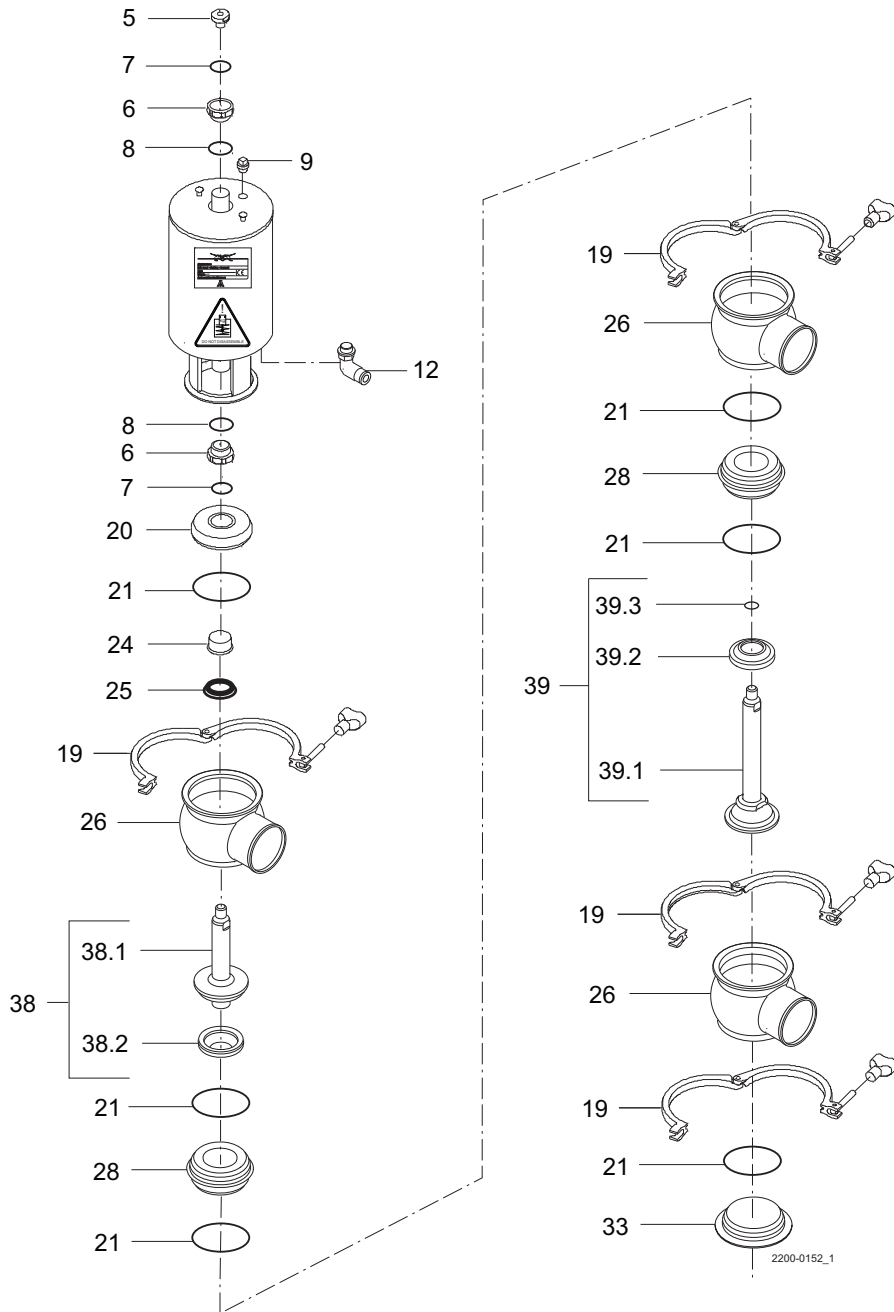


Do **NOT** attempt to cut the actuator open, due to spring under load danger.

AND



Do **NOT** attempt to cut the actuator open, due to spring under load danger.





## Change-over valve - TR2

Pos	Qty	Denomination	1½"	2"	2½"	3"	4"
<b>Actuator</b>							
		Actuator, complete (NO-RA) .....	9613154836	9613163137	9613154838	9613154839	9613163140
		Actuator, complete (NC-RA) .....	9613154831	9613154832	9613154833	9613154834	9613154835
		Actuator, complete (A/A) .....	9613163141	9613163142	9613163143	9613163144	9613163145
5	1	Adapter, plastic (- 0115) .....					
	1	Adapter, steel (0115 - 0518) .....					
	1	Adapter, steel (0518 -) .....	9615374701	9615374701	9615374701	9615374701	9615374701
6	□	Bushing .....					
7	□	O-ring .....					
8	□	O-ring .....					
9	1	Plug .....	9613414101	9613414101	9613414101	9613414101	9613414101
12	1(2)	Air fitting .....	9611994682	9611994682	9611994682	9611994682	9611994682
<b>Clamp</b>							
19	4	Clamp .....	9612939316	9612939317	9612939318	9612939319	9612939320
<b>Bonnet</b>							
20	1	Bonnet .....	9613127102	9613127103	9613127104	9613127105	9613127106
21	◆	O-ring, EPDM (standard) .....					
	◆	O-ring, HNBR .....					
	◆	O-ring, FPM .....					
		O-ring, set (10 pcs.) EPDM .....	9614059422	9614059425	9614059428	9614059431	9614059434
		O-ring, set (10 pcs.) HNBR .....	9614059423	9614059426	9614059429	9614059432	9614059435
		O-ring, set (10 pcs.) FPM .....	9614059424	9614059427	9614059430	9614059433	9614059436
24	1	Bushing .....	9613125002	9613125002	9613125002	9613125002	9613125002
25	◆	Lip seal, EPDM (standard) .....					
	◆	Lip seal, HNBR .....					
	◆	Lip seal, FPM .....					
		Lip seal, set (10 pcs.) EPDM .....	9614059419	9614059419	9614059419	9614059419	9614059419
		Lip seal, set (10 pcs.) HNBR .....	9614059420	9614059420	9614059420	9614059420	9614059420
		Lip seal, set (10 pcs.) FPM .....	9614059421	9614059421	9614059421	9614059421	9614059421
33	1	Lower bonnet .....	9613130102	9613130103	9613130104	9613130105	9613130106
<b>Seat</b>							
28	2	Seat .....	9613127502	9613127503	9613127504	9613127505	9613127506
<b>Valve Body</b>							
26	3	Valve body, upper, 1 port, clamp .....	9613161503	9613161505	9613161507	9613161509	9613161511
	3	Valve body, upper, 2 ports, clamp .....	9613161504	9613161506	9613161508	9613161510	9613161512
	3	Valve body, upper, 1 port, welding ends .....	9613139315	9613139317	9613139319	9613139321	9613139323
	3	Valve body, upper, 2 ports, welding ends .....	9613139316	9613139318	9613139320	9613139322	9613139324
<b>Valve Plug</b>							
38	1	Plug, change over upper RA, complete .....	9613162702	9613162703	9613162704	9613162705	9613162706
38.1	1	Plug, change over upper RA .....	9613162902	9613162903	9613162904	9613162905	9613162906
38.2◆	1	Plug seal, PTFE .....					
		Plug seal, set (10 pcs.) PTFE .....	9614059449	9614059450	9614059451	9614059452	9614059453
39	1	Plug, change over lower RA, complete .....	9613162802	9613162803	9613162804	9613162805	9613162806
39.1	1	Plug, change over lower RA .....	9613163002	9613163003	9613163004	9613163005	9613163006
39.2	1	Plug seal, PTFE .....					
		Plug seal, set (10 pcs.) PTFE .....	9614059449	9614059450	9614059451	9614059452	9614059453
39.3◆	1	O-ring, EPDM (standard) .....					
	◆	O-ring, HNBR .....					
	◆	O-ring, FPM .....					
		O-ring, set (10 pcs.) EPDM .....	9614059443	9614059443	9614059443	9614059443	9614059443
		O-ring, set (10 pcs.) HNBR .....	9614059445	9614059445	9614059445	9614059445	9614059445
		O-ring, set (10 pcs.) FPM .....	9614059447	9614059447	9614059447	9614059447	9614059447
			<b>1½"</b>	<b>2"</b>	<b>2½"</b>	<b>3"</b>	<b>4"</b>
□		<b>Service kit, actuator .....</b>	<b>9611926500</b>	<b>9611926500</b>	<b>9611926500</b>	<b>9611926500</b>	<b>9611926500</b>
◆		<b>Service kit, EPDM .....</b>	<b>9611926663</b>	<b>9611926664</b>	<b>9611926665</b>	<b>9611926666</b>	<b>9611926667</b>
◆		<b>Service kit, HNBR .....</b>	<b>9611926668</b>	<b>9611926669</b>	<b>9611926670</b>	<b>9611926671</b>	<b>9611926672</b>
◆		<b>Service kit, FPM .....</b>	<b>9611926673</b>	<b>9611926674</b>	<b>9611926675</b>	<b>9611926676</b>	<b>9611926677</b>

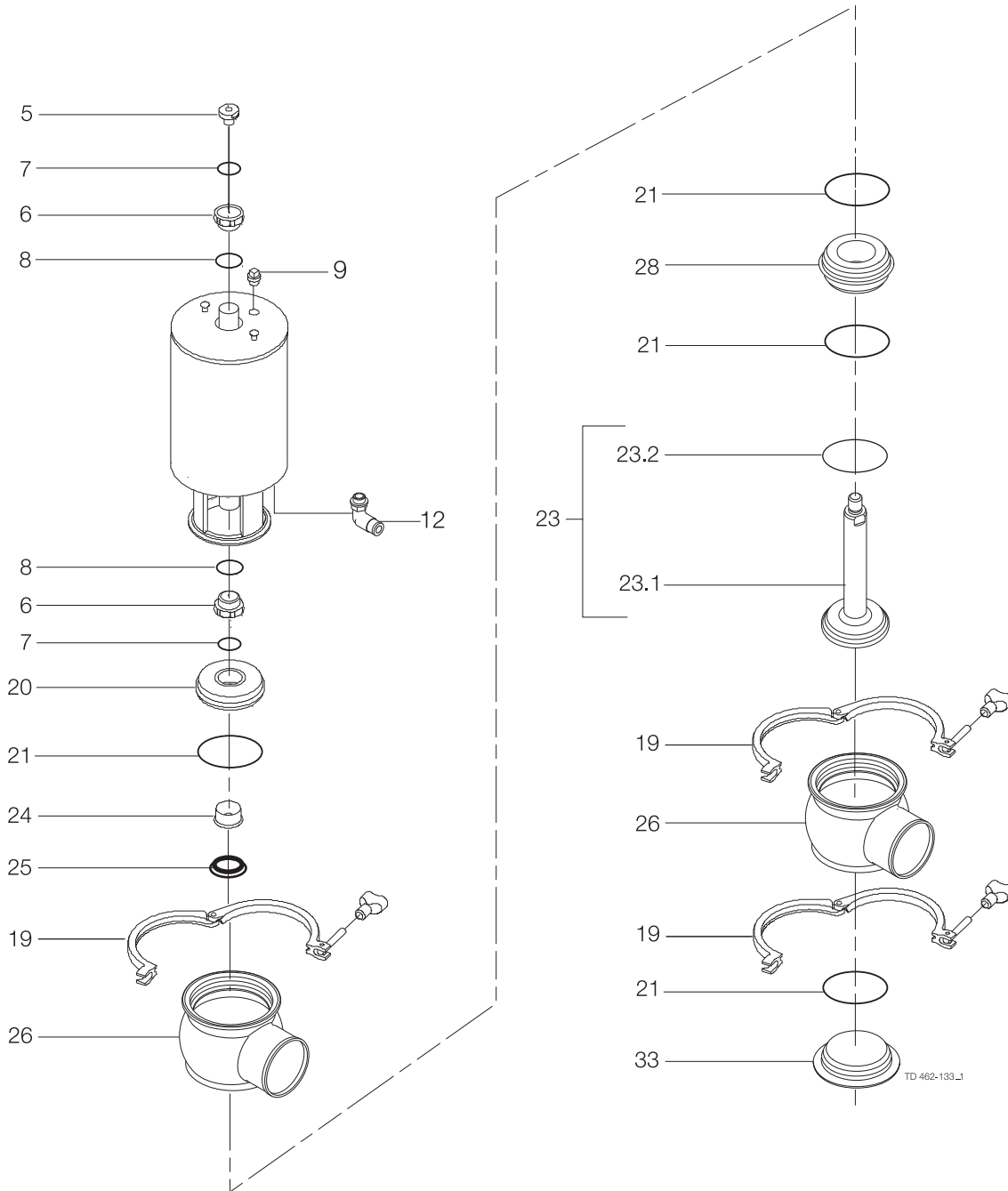
Parts marked with □ are included in the service kits (actuator).

Parts marked with ◆ are included in the service kits (product wetted parts).

Recommended spare parts: Service kits.

TD 900346/3





# Shut-off valve - elastomer plug seal

Pos	Qty	Denomination	1"	1½"	2"	2½"	3"	4"
<b>Actuator</b>								
		Actuator, complete (NO-RA) .....	9613154836	9613154836	9613163137	9613154838	9613154839	9613163140
		Actuator, complete (NC-RA) .....	9613154831	9613154831	9613154832	9613154833	9613154834	9613154835
		Actuator, complete (A/A) .....	9613163141	9613163141	9613163142	9613163143	9613163144	9613163145
5	1	Adapter, plastic (- 0115) .....						
	1	Adapter, steel (0115 - 0518) .....						
	1	Adapter, steel (0518 -) .....	9615374701	9615374701	9615374701	9615374701	9615374701	9615374701
6	□	Bushing .....						
7	□	O-ring .....						
8	□	O-ring .....						
9	1	Plug .....	9613414101	9613414101	9613414101	9613414101	9613414101	9613414101
12	1(2)	Air fitting .....	9611994682	9611994682	9611994682	9611994682	9611994682	9611994682
<b>Clamp</b>								
19	3	Clamp .....	9612939316	9612939316	9612939317	9612939318	9612939319	9612939320
<b>Bonnet</b>								
20	1	Bonnet .....	9613127102	9613127102	9613127103	9613127104	9613127105	9613127106
21	◆	O-ring, EPDM (standard) .....						
	◆	O-ring, HNBR .....						
	◆	O-ring, FPM .....						
		O-ring, set (10 pcs.) EPDM .....	9614059422	9614059422	9614059425	9614059428	9614059431	9614059434
		O-ring, set (10 pcs.) HNBR .....	9614059423	9614059423	9614059426	9614059429	9614059432	9614059435
		O-ring, set (10 pcs.) FPM .....	9614059424	9614059424	9614059427	9614059430	9614059433	9614059436
24	1	Bushing .....	9613125002	9613125002	9613125002	9613125002	9613125002	9613125002
25	◆	Lip seal, EPDM (standard) .....						
	◆	Lip seal, HNBR .....						
	◆	Lip seal, FPM .....						
		Lip seal, set (10 pcs.) EPDM .....	9614059419	9614059419	9614059419	9614059419	9614059419	9614059419
		Lip seal, set (10 pcs.) HNBR .....	9614059420	9614059420	9614059420	9614059420	9614059420	9614059420
		Lip seal, set (10 pcs.) FPM .....	9614059421	9614059421	9614059421	9614059421	9614059421	9614059421
33	1	Lower bonnet .....	9613130102	9613130102	9613130103	9613130104	9613130105	9613130106
<b>Seat</b>								
28	1	Seat .....	9613127501	9613127502	9613127503	9613127504	9613127505	9613127506
<b>Valve Body</b>								
26	2	Valve body, upper, 1 port, clamp ..	9613161501	9613161503	9613161505	9613161507	9613161509	9613161511
	2	Valve body, upper, 2 ports, clamp ..	9613161502	9613161504	9613161506	9613161508	9613161510	9613161512
	2	Valve body, upper, 1 port, welding ends .....	9613139313	9613139315	9613139317	9613139319	9613139321	9613139323
	2	Valve body, upper, 2 ports, welding ends .....	9613139314	9613139316	9613139318	9613139320	9613139322	9613139324
<b>Valve Plug</b>								
23	1	Plug, shut-off, RA, complete, EPDM (standard) .....	9613127601	9613127602	9613127603	9613127604	9613127605	9613127606
	1	Plug, shut-off, RA, complete, HNBR .....	9613127613	9613127614	9613127615	9613127616	9613127617	9613127618
	1	Plug, shut-off, RA, complete, FPM .....	9613127625	9613127626	9613127627	9613127628	9613127629	9613127630
23.1	1	Plug, shut-off .....	9613149801	9613139902	9613139903	9613139904	9613139905	9613139906
23.2	◆	Plug seal, EPDM (standard) .....						
	◆	Plug seal, HNBR .....						
	◆	Plug seal, FPM .....						
		Plug seal, set (10 pcs.) EPDM ..	9614059401	9614059404	9614059407	9614059410	9614059413	9614059416
		Plug seal, set (10 pcs.) HNBR ..	9614059402	9614059405	9614059408	9614059411	9614059414	9614059417
		Plug seal, set (10 pcs.) FPM .....	9614059403	9614059406	9614059409	9614059412	9614059415	9614059418
			<b>1"</b>	<b>1½"</b>	<b>2"</b>	<b>2½"</b>	<b>3"</b>	<b>4"</b>
□		Service kit, actuator .....	9611926500	9611926500	9611926500	9611926500	9611926500	9611926500
◆		Service kit, EPDM .....	9611926525	9611926526	9611926527	9611926528	9611926529	9611926530
◆		Service kit, HNBR .....	9611926531	9611926532	9611926533	9611926534	9611926535	9611926536
◆		Service kit, FPM .....	9611926537	9611926538	9611926539	9611926540	9611926541	9611926542

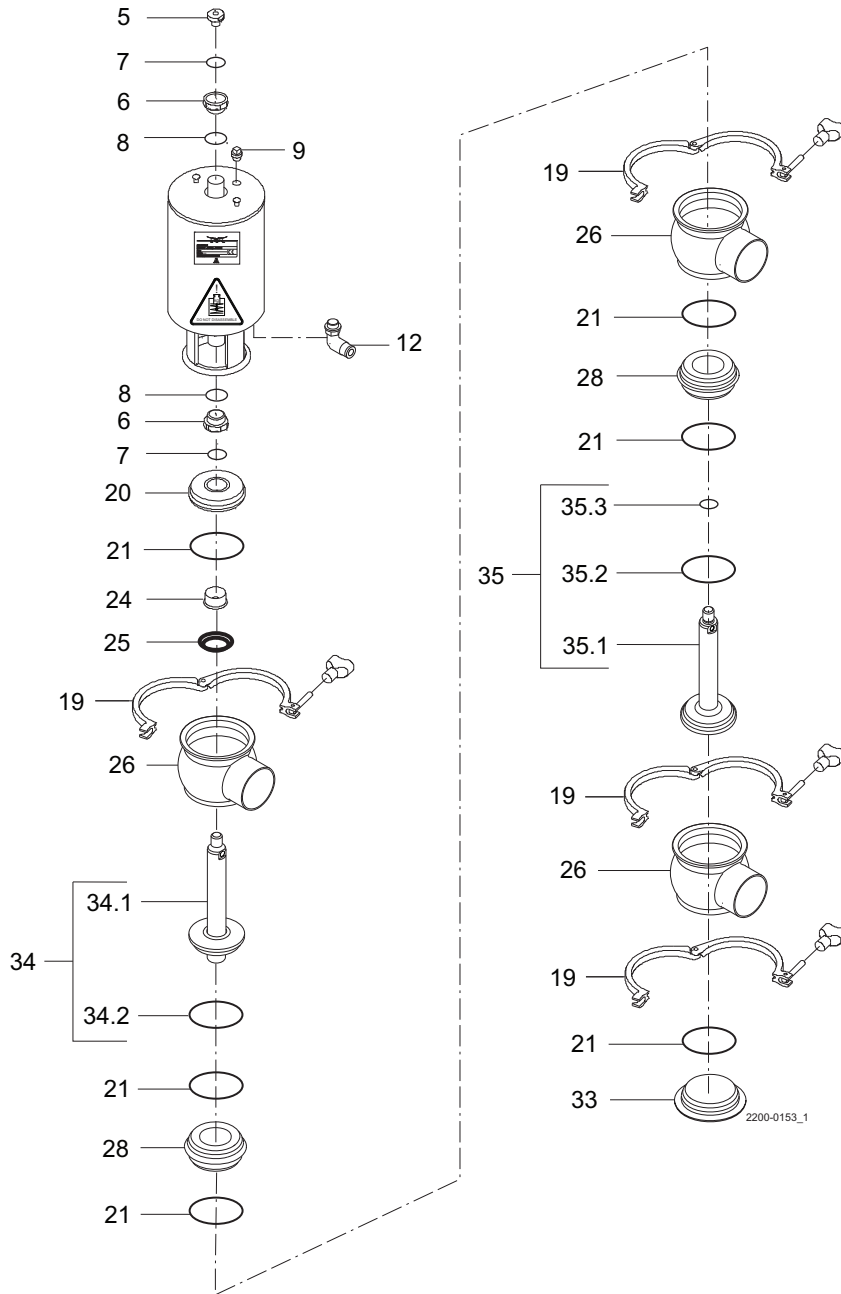
Parts marked with □ are included in the service kits (actuator).

Parts marked with ◆ are included in the service kits (product wetted parts).

Recommended spare parts: Service kits.

TD 900365/2

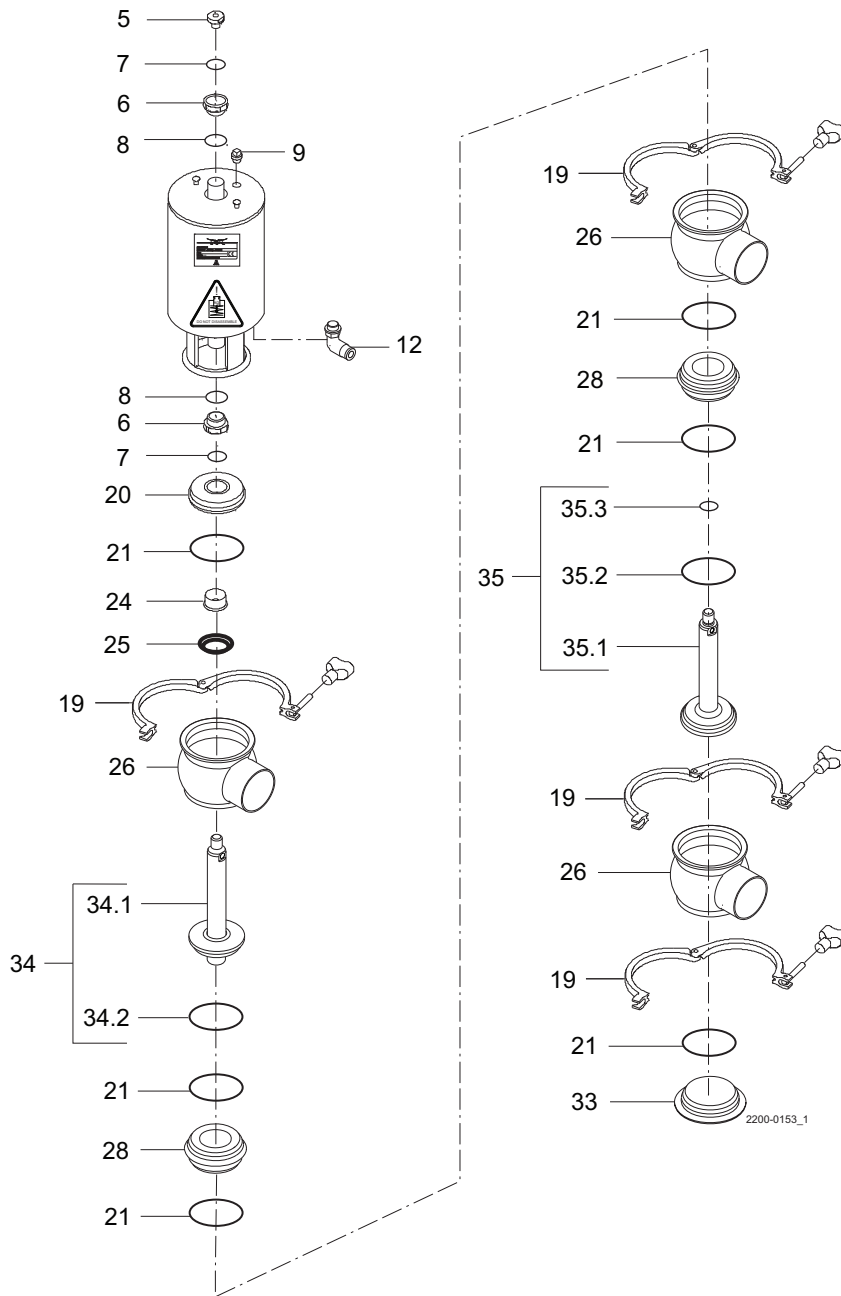




## Change-over valve - elastomer plug seal

Pos	Qty	Denomination	1"	1½"	2"	2½"	3"	4"
<b>Actuator</b>								
		Actuator, complete (NO-RA) .....	9613154836	9613154836	9613163137	9613154838	9613154839	9613163140
		Actuator, complete (NC-RA) .....	9613154831	9613154831	9613154832	9613154833	9613154834	9613154835
		Actuator, complete (A/A) .....	9613163141	9613163141	9613163142	9613163143	9613163144	9613163145
5	1	Adapter, plastic (- 0115) .....						
	1	Adapter, steel (0115 - 0518) .....						
	1	Adapter, steel (0518 -) .....	9615374701	9615374701	9615374701	9615374701	9615374701	9615374701
6	□ 2	Bushing .....						
7	□ 2	O-ring .....						
8	□ 2	O-ring .....						
9	1	Plug .....	9613414101	9613414101	9613414101	9613414101	9613414101	9613414101
12	1(2)	Air fitting .....	9611994682	9611994682	9611994682	9611994682	9611994682	9611994682
<b>Clamp</b>								
19	4	Clamp .....	9612939316	9612939316	9612939317	9612939318	9612939319	9612939320
<b>Bonnet</b>								
20	1	Bonnet .....	9613127102	9613127102	9613127103	9613127104	9613127105	9613127106
21	◆ 6	O-ring, EPDM (standard) .....						
	◆ 6	O-ring, HNBR .....						
	◆ 6	O-ring, FPM .....						
		O-ring, set (10 pcs.) EPDM .....	9614059422	9614059422	9614059425	9614059428	9614059431	9614059434
		O-ring, set (10 pcs.) HNBR .....	9614059423	9614059423	9614059426	9614059429	9614059432	9614059435
		O-ring, set (10 pcs.) FPM .....	9614059424	9614059424	9614059427	9614059430	9614059433	9614059436
24	1	Bushing .....	9613125002	9613125002	9613125002	9613125002	9613125002	9613125002
25	◆ 1	Lip seal, EPDM (standard) .....						
	◆ 1	Lip seal, HNBR .....						
	◆ 1	Lip seal, FPM .....						
		Lip seal, set (10 pcs.) EPDM .....	9614059419	9614059419	9614059419	9614059419	9614059419	9614059419
		Lip seal, set (10 pcs.) HNBR .....	9614059420	9614059420	9614059420	9614059420	9614059420	9614059420
		Lip seal, set (10 pcs.) FPM .....	9614059421	9614059421	9614059421	9614059421	9614059421	9614059421
33	1	Lower bonnet .....	9613130102	9613130102	9613130103	9613130104	9613130105	9613130106
<b>Seat</b>								
28	2	Seat .....	9613127501	9613127502	9613127503	9613127504	9613127505	9613127506
<b>Valve Body</b>								
26	3	Valve body, upper, 1 port, clamp ..	9613161501	9613161503	9613161505	9613161507	9613161509	9613161511
	3	Valve body, upper, 2 ports, clamp ..	9613161502	9613161504	9613161506	9613161508	9613161510	9613161512
	3	Valve body, upper, 1 port, welding ends .....	9613139313	9613139315	9613139317	9613139319	9613139321	9613139323
	3	Valve body, upper, 2 ports , welding ends .....	9613139314	9613139316	9613139318	9613139320	9613139322	9613139324
<b>Valve Plug</b>								
34	1	Plug, change-over, upper RA, complete, EPDM (standard) .....	9613162101	9613162102	9613162103	9613162104	9613162105	9613162106
	1	Plug, change-over, upper RA, complete, HNBR .....	9613162113	9613162114	9613162115	9613162116	9613162117	9613162118
	1	Plug, change-over, upper RA, complete, FPM .....	9613162125	9613162126	9613162127	9613162128	9613162129	9613162130
34.1	1	Plug, change-over, upper RA, .....	9613150201	9613140102	9613140103	9613140104	9613140105	9613140106
34.2	◆ 1	Plug seal, EPDM (standard) .....						
	◆ 1	Plug seal, HNBR .....						
	◆ 1	Plug seal, FPM .....						
		Plug seal, set (10 pcs.) EPDM .....	9614059401	9614059404	9614059407	9614059410	9614059413	9614059416
		Plug seal, set (10 pcs.) HNBR .....	9614059402	9614059405	9614059408	9614059411	9614059414	9614059417
		Plug seal, set (10 pcs.) FPM .....	9614059403	9614059406	9614059409	9614059412	9614059415	9614059418
35	1	Plug, change-over, lower RA, complete, EPDM (standard) .....	9613162201	9613162202	9613162203	9613162204	9613162205	9613162206
	1	Plug, change-over, lower RA, complete, HNBR .....	9613162213	9613162214	9613162215	9613162216	9613162217	9613162218
	1	Plug, change-over, lower RA, complete, FPM .....	9613162225	9613162226	9613162227	9613162228	9613162229	9613162230
35.1	1	Plug, change-over, lower RA, .....	9613150501	9613164601	9613164701	9613164702	9613164703	9613164704
35.2	◆ 1	Plug seal, EPDM (standard) .....						
	◆ 1	Plug seal, HNBR .....						
	◆ 1	Plug seal, FPM .....						
		Plug seal, set (10 pcs.) EPDM .....	9614059401	9614059404	9614059407	9614059410	9614059413	9614059416
		Plug seal, set (10 pcs.) HNBR .....	9614059402	9614059405	9614059408	9614059411	9614059414	9614059417
		Plug seal, set (10 pcs.) FPM .....	9614059403	9614059406	9614059409	9614059412	9614059415	9614059418
35.3	◆ 1	O-ring, EPDM (standard) .....						
	◆ 1	O-ring, HNBR .....						
	◆ 1	O-ring, FPM .....						
		O-ring, set (10 pcs.) EPDM .....	9614059442	9614059443	9614059443	9614059443	9614059443	9614059443
		O-ring, set (10 pcs.) HNBR .....	9614059444	9614059445	9614059445	9614059445	9614059445	9614059445
		O-ring, set (10 pcs.) FPM .....	9614059446	9614059447	9614059447	9614059447	9614059447	9614059447





## Change-over valve - elastomer plug seal

		1"	1½"	2"	2½"	3"	4"
□	Service kit, actuator .....	9611926500	9611926500	9611926500	9611926500	9611926500	9611926500
◆	Service kit, EPDM .....	9611926597	9611926598	9611926599	9611926600	9611926601	9611926602
◆	Service kit, HNBR .....	9611926603	9611926604	9611926605	9611926606	9611926607	9611926608
◆	Service kit, FPM .....	9611926609	9611926610	9611926611	9611926612	9611926613	9611926614

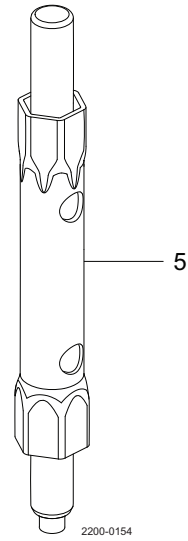
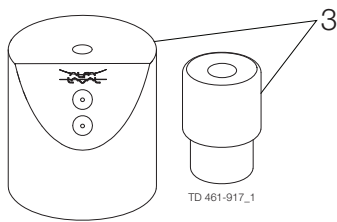
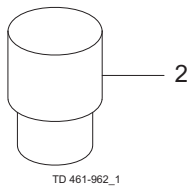
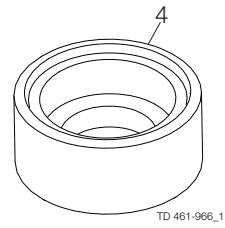
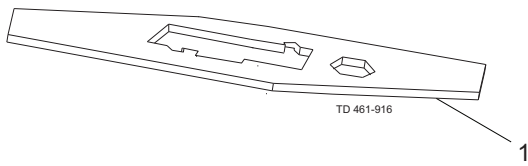
Parts marked with □ are included in the service kits (actuator).

Parts marked with ◆ are included in the service kits (product wetted parts).

Recommended spare parts: Service kits.

TD 900365/3







## Mounting tool

Pos	Qty	Denomination	1" - 2½"	3" - 4"
1	1	Service tool for maintainable actuator .....	3135302191	9612454001

TD 900513/2

Pos	Qty	Denomination	1" - 4"
2	1	Tool for bushing (pos. 24) .....	9613160901

TD 900519/2

Pos	Qty	Denomination	1"	1½"	2"
3	1	Mounting tool for elastomer plug seals .....	Not available	9613172901	9613172902
4	1	Mounting tool for TR2 plugs .....	9613163206	9613163201	9613163202

Pos	Qty	Denomination	2½"	3"	4"
3	1	Mounting tool for elastomer plug seals .....	9613172902	9613172903	9613172903
4	1	Mounting tool for TR2 plugs .....	9613163203	9613163204	9613163205

TD 900521/2

Pos	Qty	Denomination	1"-4"
5	1	Tool for actuator bushing (pos. 6) .....	9614198401

TD 900-701



#### **How to contact Alfa Laval**

Contact details for all countries are continually updated on our website.

Please visit [www.alfalaval.com](http://www.alfalaval.com) to access the information directly.

© Alfa Laval Corporate AB

This document and its contents is owned by Alfa Laval Corporate AB and protected by laws governing intellectual property and thereto related rights. It is the responsibility of the user of this document to comply with all applicable intellectual property laws. Without limiting any rights related to this document, no part of this document may be copied, reproduced or transmitted in any form or by any means (electronic, mechanical, photocopying, recording, or otherwise), or for any purpose, without the expressed permission of Alfa Laval Corporate AB. Alfa Laval Corporate AB will enforce its rights related to this document to the fullest extent of the law, including the seeking of criminal prosecution.



**CSI**

CONTACT CSI FOR MORE INFORMATION | [CSIDESIGNS.COM](http://CSIDESIGNS.COM) | [SALES@CSIDESIGNS.COM](mailto:SALES@CSIDESIGNS.COM) | 417.831.1411