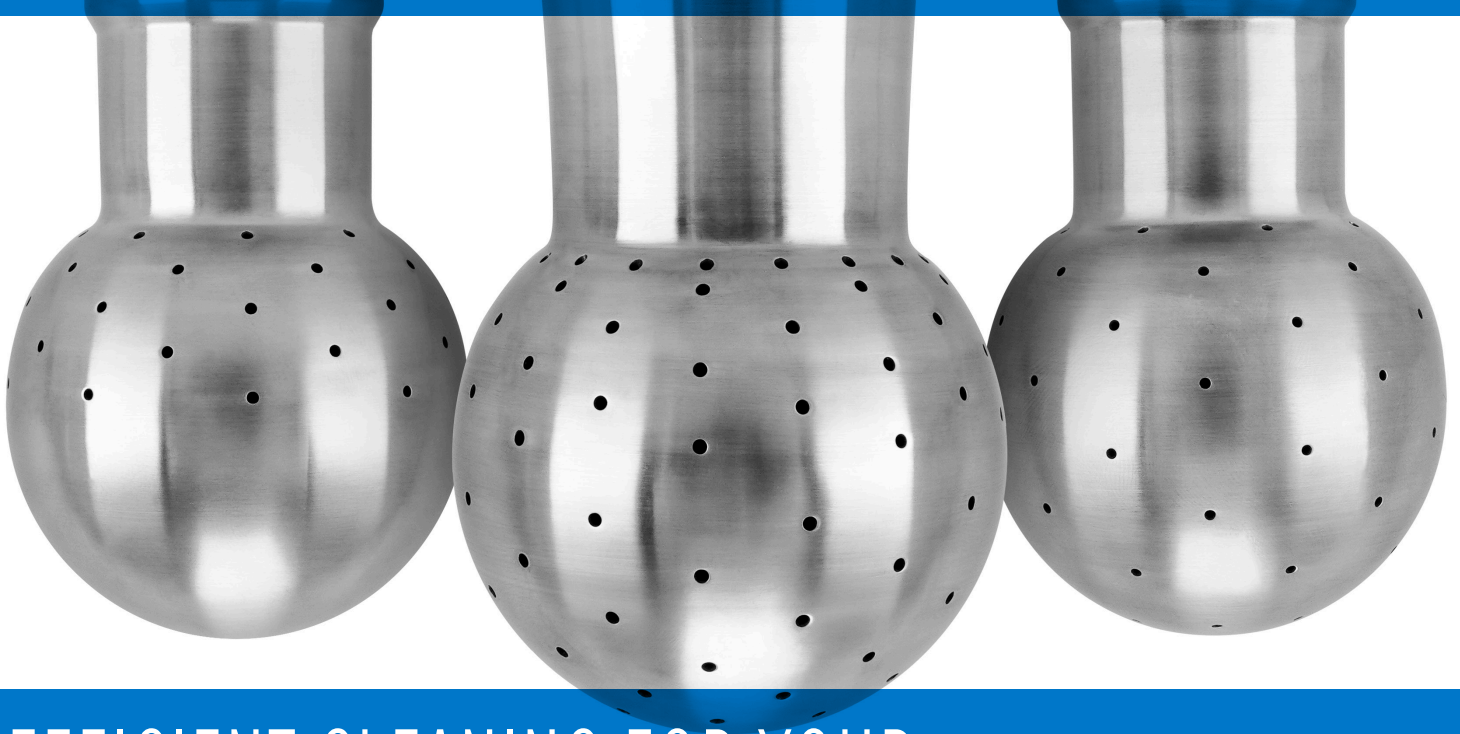


STATIC SPRAY BALLS



EFFICIENT CLEANING FOR YOUR TANKS, TOTES, AND OTHER VESSELS

SIZES

- 1.25"–5"

CONNECTIONS

- Slip fit collar with locking clip
- Butt weld
- Tri-Clamp®
- NPT

MATERIALS

- 316L
- AL-6XN®
- Hastelloy® C-22®

FINISH OPTIONS

- 32 μin Ra (Mechanical)
- 20 μin Ra (Mechanical)
- 15 μin Ra (Mechanical & Electropolish)

FLOW RATE

- 5-100 GPMs at 25 PSIG

APPLICATIONS

- Processed Food and Beverage industries — fats, oils, pre-mix sweeteners, colorants, flavorings, and other additives or minor ingredients
- Chemical industries — resins, paints, and coatings
- High-Acid Food, Dairy, Brewery, Home & Personal Care, Pharmaceutical, Biotech, and Agrochemical industries
- IBCs and drums

SPRAY PATTERNS

- 360-Degree for even dispensing of CIP Solution
- 180-Degree Upward for concentrated cleaning of the vessel head with the tank walls being washed through the cascading of the CIP solution
- 180-Degree Downward for concentrated cleaning of the vessel's internal attachments, below the vessel head, being washed with the CIP solution

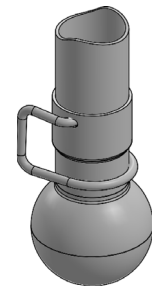
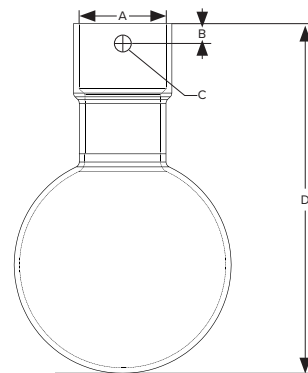


STATIC SPRAY BALLS

DIMENSIONS

SPRAY BALL DIMENSIONS				
Ball Diameter	A	B	C	D
1-1/4"	1/2	.250	.136	2-5/16
	3/4	.312	.136	2-1/2
1-1/2"	1/2	.250	.136	2-5/8
	3/4	.312	.136	2-3/4
	1	.350	.136	2-15/16
2"	3/4	.312	.136	3-15/16
	1	.350	.136	3-1/2
2-1/2"	3/4	.312	.136	3-13/16
	1	.350	.136	4
	1-1/2	.375	.191	4-3/8
3"	1	.350	.136	4-9/16
	1-1/2"	.375	.191	4-15/16
	2	.375	.191	5-1/4
3-1/2"	1	.350	.136	5-1/16
	1-1/2	.375	.191	5-7/16
	2	.375	.191	5-13/16

SPRAY BALL DIMENSIONS				
Ball Diameter	A	B	C	D
4"	1-1/2	.375	.191	6
	2	.375	.191	6-3/8
	3	.500	.250	6-15/16
5"	1-1/2	.375	.191	7
	2	.375	.191	7-7/16
	3	.500	.250	8-3/8



2 1/2" SPRAY BALL WITH
1 1/2" SLIP-FIT & PIN

PART NUMBER CONFIGURATION

SFSB 250 X 150 316 360 - EP

STYLE	DIAMETER OF BALL	CONNECTION SIZE	CONNECTION TYPE	MATERIAL	SPRAY PATTERN	FLOW	PRESSURE	FINISH
SB (BW, NPT, TC) SFSB = SLIP FIT SPRAY BALL - STANDARD	125 = 1.25" 150 = 1.50" 200 = 2.00" 250 = 2.50" 300 = 3.00" 350 = 3.50" 400 = 4.00" 500 = 5.00"	050 = 0.50" 075 = 0.75" 100 = 1.00" 150 = 1.50" 200 = 2.00"	BLANK = NONE (SFSB) BW = BUTT WELD (SB) NPT = MALE CONNECTION (SB) FNPT = FEMALE CONNECTION (SB) TC = TRI-CLAMP (SB)	316 = 316L AL6 = AL-6XN® C22 = C-22®	360 = FULL COVERAGE 180U = 180° UP 180D = 180° DOWN 180S = 180° SIDE	(GPM)	(PSI)	32 = 32 μin Ra (STANDARD) 15 = 15 μin Ra 20 = 20 μin Ra EP = 15 μin Ra (ELECTROPOLISH)



CSIDESIGNS.COM | +1.417.831.1411 | SALES@CSIDESIGNS.COM
SPRINGFIELD, MO | GRAND PRAIRIE, TX | DURHAM, NC | FRESNO, CA

