

HOSE BARB ADAPTERS



FOR EASY CONNECTION BETWEEN SANITARY CLAMP AND FLEXIBLE HOSE

SIZES

- 1/4" to 4" in stock

CONNECTIONS

- Butt weld
- Tri-Clamp®
- Other options available —
Bevel Seat, I Line, Camlock

MATERIALS

- 304 or 316L
- AL-6XN®
- Hastelloy® C-22®

FINISH OPTIONS

- 32Ra ID / 32Ra OD (7)
- 20Ra ID / 32Ra OD (PL)
- 15Ra EP ID / 32Ra OD (PM)
- Custom finishes available upon request

APPLICATIONS

- Food, Dairy, Beverage, and Brewery
- Home and Personal Care
- Pharmaceutical, Biotech, and Chemical industries

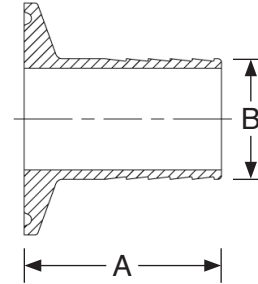


HOSE BARB ADAPTERS

DIMENSIONS

TRI-CLAMP X HOSE BARB ADAPTERS

Size	A	B	# of Barbs	Part Number
1/4 X 1/4	1.50	0.312	5	14MPHR-0.25
1/2 X 1/4	1.50	0.312	5	14MPHR-0.5 X 0.25
1/2 X 3/8	1.50	0.405	5	14MPHR-0.5 X 0.375
1/2 X 1/2	1.50	0.540	5	14MPHR-0.5
3/4 X 1/4	1.50	0.312	5	14MPHR-0.75 X 0.25
3/4 X 3/8	1.50	0.405	5	14MPHR-0.75 X 0.375
3/4 X 1/2	1.50	0.540	5	14MPHR-0.75 X 0.5
3/4 X 3/4	1.50	0.780	5	14MPHR-0.75
1 X 1/4	1.50	0.312	5	14MPHR-1 X 0.25
1 X 3/8	1.50	0.405	5	14MPHR-1 X 0.375
1 X 1/2	1.50	0.540	5	14MPHR-1 X 0.5
1 X 3/4	1.50	0.780	5	14MPHR-1 X 0.75
1 X 1	1.50	1.030	5	14MPHR-1
1 1/2 X 1/4	1.50	0.312	5	14MPHR-1.5 X 0.25
1 1/2 X 3/8	1.50	0.405	5	14MPHR-1.5 X 0.375
1 1/2 X 1/2	1.50	0.540	5	14MPHR-1.5 X 0.5
1 1/2 X 3/4	1.50	0.780	5	14MPHR-1.5 X 0.75
1 1/2 X 1	1.50	1.030	5	14MPHR-1.5 X 1
1 1/2 X 1 1/4	1.50	1.280	5	14MPHR-1.5 X 1.25
1 1/2 X 1 1/2	1.69	1.530	5	14MPHR-1.5
2 X 1/4	1.69	0.312	5	14MPHR-2 X 0.25
2 X 3/8	1.69	0.405	5	14MPHR-2 X 0.375
2 X 1/2	1.69	0.540	5	14MPHR-2 X 0.5
2 X 3/4	1.69	0.780	5	14MPHR-2 X 0.75
2 X 1	1.69	1.030	5	14MPHR-2 X 1
2 X 1 1/4	1.69	1.280	5	14MPHR-2 X 1.25
2 X 1 1/2	1.69	1.530	5	14MPHR-2 X 1.5
2 X 2	2.31	2.030	8	14MPHR-2
2 1/2 X 1/4	1.69	0.312	5	14MPHR-2.5 X 0.25
2 1/2 X 3/8	1.69	0.405	5	14MPHR-2.5 X 0.375
2 1/2 X 1/2	1.69	0.540	5	14MPHR-2.5 X 0.5
2 1/2 X 3/4	1.69	0.780	5	14MPHR-2.5 X 0.75
2 1/2 X 1	1.69	1.030	5	14MPHR-2.5 X 1
2 1/2 X 1 1/4	1.69	1.280	5	14MPHR-2.5 X 1.25
2 1/2 X 1 1/2	1.69	1.530	5	14MPHR-2.5 X 1.5
2 1/2 X 2	2.31	2.030	8	14MPHR-2.5 X 2



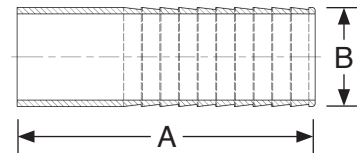
Size	A	B	# of Barbs	Part Number
2 1/2 X 2 1/2	2.34	2.530	8	14MPHR-2.5
3 X 1/4	2.50	0.312	5	14MPHR-3 X 0.25
3 X 3/8	2.50	0.405	5	14MPHR-3 X 0.375
3 X 1/2	2.50	0.540	5	14MPHR-3 X 0.5
3 X 3/4	2.50	0.780	5	14MPHR-3 X 0.75
3 X 1	2.50	1.030	5	14MPHR-3 X 1
3 X 1 1/4	2.50	1.280	5	14MPHR-3 X 1.25
3 X 1 1/2	2.50	1.530	5	14MPHR-3 X 1.5
3 X 2	2.50	2.030	8	14MPHR-3 X 2
3 X 2 1/2	2.50	2.530	8	14MPHR-3 X 2.5
3 X 3	2.50	3.030	10	14MPHR-3
4 X 1/4	2.50	0.312	5	14MPHR-4 X 0.25
4 X 3/8	2.50	0.405	5	14MPHR-4 X 0.375
4 X 1/2	2.50	0.540	5	14MPHR-4 X 0.5
4 X 3/4	2.50	0.780	5	14MPHR-4 X 0.75
4 X 1	2.50	1.030	5	14MPHR-4 X 1
4 X 1 1/4	2.50	1.280	5	14MPHR-4 X 1.25
4 X 1 1/2	2.50	1.530	5	14MPHR-4 X 1.5
4 X 2	2.50	2.030	8	14MPHR-4 X 2
4 X 2 1/2	2.50	2.530	8	14MPHR-4 X 2.5
4 X 3	2.50	3.030	10	14MPHR-4 X 3
4 X 4	2.50	4.030	10	14MPHR-4

SIZES ARE SHOWN IN INCHES. OTHER LENGTHS AND SIZES AVAILABLE UPON REQUEST.
PART NUMBER = 14MPHR-TRI-CLAMP SIZE X HOSE BARB SIZE-MATERIAL-FINISH

BUTT WELD X HOSE BARB ADAPTERS

Size	A	B	# of Barbs	Part Number
3/8	1.75	0.375	5	F0038
1/2	1.75	0.500	5	F0036
3/4	1.75	0.750	5	F0037
1	3.00	1.000	10	F0021
1 1/2	3.00	1.500	10	F0022
2	3.00	2.000	10	F0024
2 1/2	3.00	2.500	10	F0040
3	3.00	3.000	10	F0025

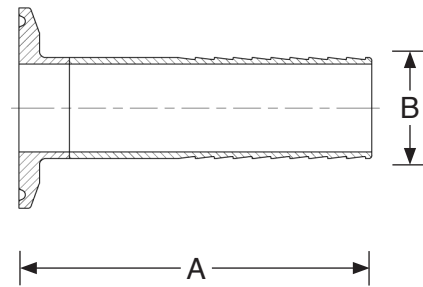
SIZES ARE SHOWN IN INCHES. SIZE AND PART NUMBERS APPLY TO 316L MATERIAL AND OD TUBE SIZES. ALSO KNOWN AS 14WHR.



TRI-CLAMP X HOSE BARB BREWERY STYLE (XL) ADAPTERS

Size	A	B	# of Barbs	Part Number
3/8	2.25	0.375	5	14MPHRXL-0.375
1/2	2.25	0.500	5	14MPHRXL-0.5
3/4	2.25	0.750	5	14MPHRXL-0.75
1	3.50	1.000	10	14MPHRXL-1
1 1/2	3.50	1.500	10	14MPHRXL-1.5
2	3.50	2.000	10	14MPHRXL-2
2 1/2	3.50	2.500	10	14MPHRXL-2.5
3	3.50	3.000	10	14MPHRXL-3

SIZES ARE SHOWN IN INCHES. ADDITIONAL SIZES AND FINISHES AVAILABLE.
PART NUMBER = 14MPHRXL-SIZE-MATERIAL-FINISH



CSIDESIGNS.COM | +1.417.831.1411 | SALES@CSIDESIGNS.COM
SPRINGFIELD, MO | GRAND PRAIRIE, TX | DURHAM, NC | FRESNO, CA

