

HANGERS



PRECISE FIT FOR EASY INSTALLATION OF YOUR PIPING SYSTEM

MATERIALS

- 304 stainless steel

FINISH OPTIONS

- Mill finish unless otherwise noted

OPTIONS

- Sizes 1/4" to 16"
- Tube and pipe sizes
- Inserts in Polypropylene, High Temperature, or Metal Detectable
- Rubber grommets in Alcryn or Viton
- Custom items available upon request

FEATURES & BENEFITS

- Made in the USA
- Meets USDA requirements

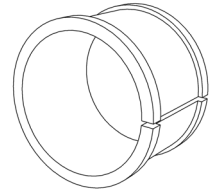
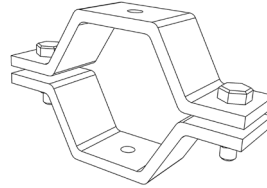
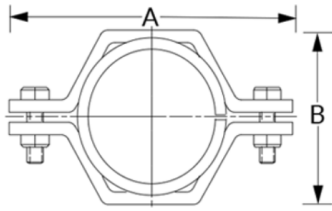
APPLICATIONS

- Food, Dairy, Beverage, and Brewery
- Home & Personal Care, Pharmaceutical, Biotech, and Chemical industries



HANGERS

DIMENSIONS



POLYPROPYLENE TUBE HEX HANGERS & INSERTS

Size	A	B	Bolt Size	Part Number
1/2	2.25	1.06	1/4 X 3/4	B24B-0.5-S-PP
3/4	2.63	1.19	1/4 X 3/4	B24B-0.75-S-PP
1	3.38	1.56	5/16 X 1	B24B-1-S-PP
1-1/2	3.75	2.13	5/16 X 1	B24B-1.5-S-PP
2	4.44	2.63	5/16 X 1	B24B-2-S-PP
2-1/2	4.94	3.13	5/16 X 1	B24B-2.5-S-PP
3	5.56	3.63	5/16 X 1	B24B-3-S-PP
4	6.63	4.63	5/16 X 1	B24B-4-S-PP
5	8.13	5.63	5/16 X 1	B24B-5-S-PP
6	9.19	6.63	5/16 X 1	B24B-6-S-PP
8	11.38	8.75	5/16 X 1	B24B-8-S-PP
10	14.50	10.50	3/8 X 1	B24B-10-S-PP
12	16.63	13.00	3/8 X 1	B24B-12-S-PP

304 TUBE HANGERS ONLY

Size	Part Number
1/2	B24B-0.5
3/4	B24B-0.75
1	B24B-1
1-1/2	B24B-1.5
2	B24B-2
2-1/2	B24B-2.5
3	B24B-3
4	B24B-4
5	B24B-5
6	B24B-6
8	B24B-8
10	B24B-10
12	B24B-12

POLYPROPYLENE INSERTS ONLY

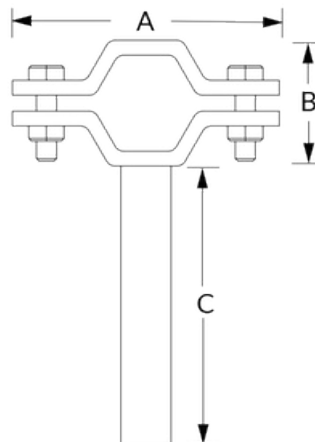
Size	Part Number
1/2	B24B-0.5-02-PP
3/4	B24B-0.75-02-PP
1	B24B-1-02-PP
1-1/2	B24B-1.5-02-PP
2	B24B-2-02-PP
2-1/2	B24B-2.5-02-PP
3	B24B-3-02-PP
4	B24B-4-02-PP
5	B24B-5-02-PP
6	B24B-6-02-PP
8	B24B-8-02-PP
10	B24B-10-02-PP
12	B24B-12-02-PP

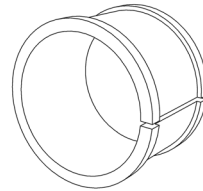
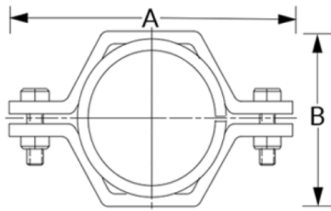
TUBE SIZES ARE SHOWN IN INCHES. PIPE SIZES (B24BV) ALSO AVAILABLE.
 DEFLECTION TEMPERATURE (@264 PSI) 120°F. DEFLECTION TEMPERATURE (@66 PSI) 225°F.
 MELTING TEMPERATURE APPROX. 329°F.

POLYPROPYLENE TUBE HANGERS WITH ROD MOUNT

Tube Size	A	B	C	Bolt Size	Part Number
1	3.38	1.56	3.50	5/16 X 1	B24B-1-S-PP-035
1-1/2	3.75	2.13	3.25	5/16 X 1	B24B-1.5-S-PP-0325
2	4.44	2.63	3.00	5/16 X 1	B24B-2-S-PP-03
2-1/2	4.94	3.13	2.75	5/16 X 1	B24B-2.5-S-PP-0275
3	5.56	3.63	2.50	5/16 X 1	B24B-3-S-PP-025
4	6.63	4.63	2.00	5/16 X 1	B24B-4-S-PP-02

SIZES ARE SHOWN IN INCHES. OTHER TUBE SIZES AND PIPE SIZES ALSO AVAILABLE.
 CONTACT US FOR A HIGH TEMPERATURE OPTION. CUSTOM ROD LENGTHS AVAILABLE UPON REQUEST.





HIGH TEMP TUBE HEX HANGERS & INSERTS

Size	A	B	Bolt Size	Part Number
1/2	2.25	1.06	1/4 X 3/4	B24B-0.5-S-PP-HH
3/4	2.63	1.19	1/4 X 3/4	B24B-0.75-S-PP-HH
1	3.38	1.56	5/16 X 1	B24B-1-S-PP-HH
1-1/2	3.75	2.13	5/16 X 1	B24B-1.5-S-PP-HH
2	4.44	2.63	5/16 X 1	B24B-2-S-PP-HH
2-1/2	4.94	3.13	5/16 X 1	B24B-2.5-S-PP-HH
3	5.56	3.63	5/16 X 1	B24B-3-S-PP-HH
4	6.63	4.63	5/16 X 1	B24B-4-S-PP-HH
5	8.13	5.63	5/16 X 1	B24B-5-S-PP-HH
6	9.19	6.63	5/16 X 1	B24B-6-S-PP-HH

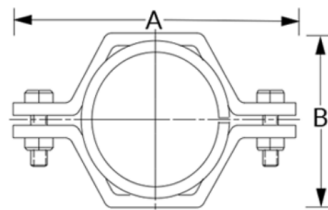
HIGH TEMP INSERTS ONLY

Size	Part Number
1/2	B24B-0.5-02-PP-HH
3/4	B24B-0.75-02-PP-HH
1	B24B-1-02-PP-HH
1-1/2	B24B-1.5-02-PP-HH
2	B24B-2-02-PP-HH
2-1/2	B24B-2.5-02-PP-HH
3	B24B-3-02-PP-HH
4	B24B-4-02-PP-HH
5	B24B-5-02-PP-HH
6	B24B-6-02-PP-HH

TUBE SIZES ARE SHOWN IN INCHES. PIPE SIZES (B24BV) ALSO AVAILABLE. INSERT SOFTENING POINT 374°F. INSERT CAN WITHSTAND CONTINUOUS TEMPERATURE OF 325°F.

METAL DETECTABLE TUBE HEX HANGERS & INSERTS

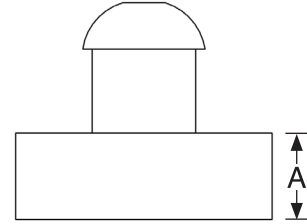
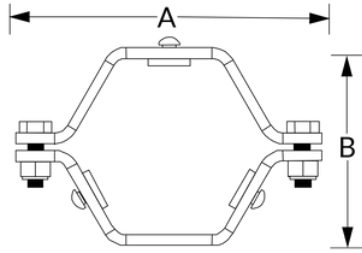
Size	A	B	Bolt Size	Part Number
1/2	2.25	1.06	1/4 X 3/4	B24B-0.5-S-DT
3/4	2.63	1.19	1/4 X 3/4	B24B-0.75-S-DT
1	3.38	1.56	5/16 X 1	B24B-1-S-DT
1-1/2	3.75	2.13	5/16 X 1	B24B-1.5-S-DT
2	4.44	2.63	5/16 X 1	B24B-2-S-DT
2-1/2	4.94	3.13	5/16 X 1	B24B-2.5-S-DT
3	5.56	3.63	5/16 X 1	B24B-3-S-DT
4	6.63	4.63	5/16 X 1	B24B-4-S-DT
6	9.19	6.63	5/16 X 1	B24B-6-S-DT



TUBE SIZES ARE SHOWN IN INCHES. PIPE SIZES (B24BV) ALSO AVAILABLE. DEFLECTION TEMPERATURE (@66 PSI) 215°F. MELTING TEMPERATURE APPROX. 300°F.

HANGERS

DIMENSIONS



RUBBER GROMMET TUBE HEX HANGERS WITH GROMMETS

Tube Size	A	B	Grommets		Part Number	
			Qty	Size	Alcryn Grommet	Viton Grommet
1/2	3.38	2.13	3	3/8	B24FCF-0.5-S	B24FCF-0.5-SFY-S
3/4	3.38	2.13	3	1/4	B24FCF-0.75-S	B24FCF-0.75-SFY-S
1	3.38	2.13	3	1/8	B24FCF-1-S	B24FCF-1-SFY-S
1-1/2	3.75	2.13	3	1/8	B24FCF-1.5-S	B24FCF-1.5-SFY-S
2	4.44	2.63	3	1/8	B24FCF-2-S	B24FCF-2-SFY-S
2-1/2	4.94	3.13	3	1/8	B24FCF-2.5-S	B24FCF-2.5-SFY-S
3	5.56	3.63	3	1/8	B24FCF-3-S	B24FCF-3-SFY-S
4	6.63	4.75	4	1/8	B24FCF-4-S	B24FCF-4-SFY-S
6	9.88	7.13	5	1/8	B24FCF-6-S	B24FCF-6-SFY-S

SIZES ARE SHOWN IN INCHES. TUBE SIZE AVAILABLE UP TO 14". PIPE SIZES (B24BV) ALSO AVAILABLE.
 ALCRYN TEMPERATURE RANGE 40°F TO 257°F.
 VITON TEMPERATURE RANGE 73°F TO 392°F.

RUBBER GROMMETS ONLY

Size A	Part Number	
	Alcryn Grommet	Viton Grommet
1/8	B24FCF-0.125-02-A	B24FCF-0.125-02-SFY
1/4	B24FCF-0.25-02-A	B24FCF-0.25-02-SFY
3/8	B24FCF-0.375-02-A	B24FCF-0.375-02-SFY
1/2	B24FCF-0.5-02-A	B24FCF-0.5-02-SFY
5/8	B24FCF-0.625-02-A	B24FCF-0.625-02-SFY



CSIDESIGNS.COM | +1.417.831.1411 | SALES@CSIDESIGNS.COM
 SPRINGFIELD, MO | GRAND PRAIRIE, TX | DURHAM, NC | FRESNO, CA

