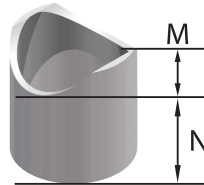


FITTER'S GUIDE



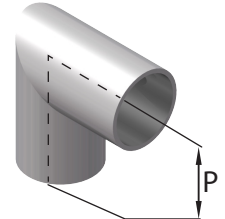
CSIDESIGNS.COM
417.831.1411

PIPE SADDLE-SCHEDULE 10-304 SS			
SIZE	M	N	PART #
1 1/2	0.45	1 9/16	PS-1.5-S10
2	0.50	1 1/2	PS-2-S10

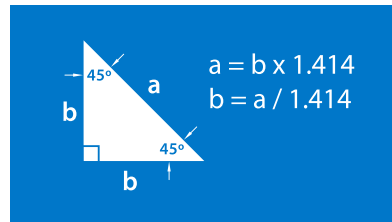
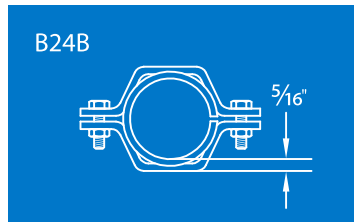


Pipe saddle offered tube OD, Sch 10, Sch 40 as well as other sizes

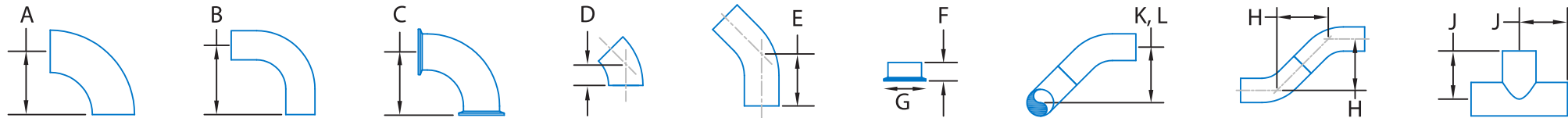
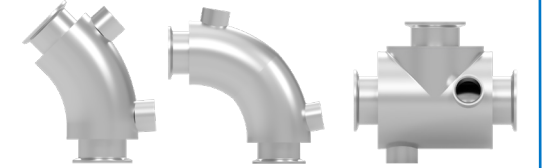
MITERED 90° ELBOW-SCHEDULE 10-304 SS		
SIZE	P	PART #
1 1/2	2 1/2	ME-1.5-S10
2	3	ME-2-S10



1.25", 2.5", and 4" are also available



CSI OFFERS JACKETED FITTINGS INCLUDING 45° & 90° ELBOWS, STANDARD & REDUCING TEES, AND STRAIGHT SPOOLS



SIZE	90° ELBOW				45° ELBOW			FERRULES				90° TO 45° ELBOW OFFSET				45° ELBOW OFFSET			TEE	TEE/45
	2WCL	B2S	L2S	B2CMP	2WK	B2KS	L2KS	14WMPS	L14AM	B14AM	OD	2WCL 2WK	2WCL B2KS	B2S 2WK	B2S B2KS	2WK 2WK	2WK B2KS	B2KS B2KS	B7WWW	B7WWW B2KS
	A	B	B	C	D	E	E	F	F	F	G	K	K	K	K	H	H	H	J	L
1/2	—	3	—	1 5/8	—	2 1/4	—	1/2	1 1/8	1 3/4	0.984	—	—	—	3 11/16	—	—	3 3/16	1 7/8	2 15/16
3/4	1 1/8	3	—	1 5/8	7/16	2 1/4	—	1/2	1 1/8	1 3/4	0.984	1 1/8	2 3/8	2 7/16	3 11/16	5/8	1 7/8	3 3/16	2	3
1	1 1/2	3	2 1/16	2	5/8	2 1/4	1 3/16	1/2	1 1/8	1 3/4	1.984	1 1/2	2 5/8	2 9/16	3 11/16	7/8	2 1/16	3 3/16	2 1/8	3 1/8
1 1/2	2 1/4	3 3/4	2 15/16	2 3/4	15/16	2 1/2	1 5/8	1/2	1 1/8	1 3/4	1.984	2 1/4	3 3/8	3 5/16	4 7/16	1 5/16	2 7/16	3 9/16	2 3/8	3 7/16
2	3	4 3/4	4 1/16	3 1/2	1 1/4	3	2 5/16	1/2	1 1/8	2 1/4	2.516	3	4 1/4	4 1/4	5 1/2	1 3/4	3	4 1/4	2 7/8	4 1/8
2 1/2	3 3/4	5 1/2	5 3/16	4 1/4	1 9/16	3 3/8	3	1/2	1 1/8	2 1/4	3.047	3 3/4	5 1/16	5	6 1/4	2 3/16	3 1/2	4 3/4	3 1/8	4 5/8
3	4 1/2	6 1/4	6 5/16	5	1 7/8	3 5/8	3 11/16	1/2	1 1/8	2 1/4	3.579	4 1/2	5 3/4	5 3/4	7	2 5/8	3 7/8	5 1/8	3 3/8	4 15/16
4	6	8	8 5/16	6 5/8	2 1/2	4 1/2	4 13/16	5/8	1 1/8	2 1/4	4.682	6	7 7/16	7 7/16	8 3/16	3 9/16	4 15/16	6 3/8	4 1/8	6 1/8
6	9	11 1/2	12 15/32	10 1/2	3 3/4	6 1/4	7 1/2	3/4	1 1/2	3	6.570	9	10 13/16	10 13/16	12 9/16	5 5/16	7 1/16	8 13/16	5 5/8	8 3/8

Wall thickness for tube OD fittings 1/2-3" is 0.065 inch, 4" is .083", and 6" is .109"