

"HM" Turbine Flowmeter

Introduction

HM-series turbine flowmeter is the solution for applications requiring an economical, accurate flowmeter. Using the proven method of counting the rotation of a turbine within a flowing stream of liquid, the "HM" turbine flowmeter is not merely a modification of an industrial design, but a design that was created specifically for the sanitary food and dairy industry.

Understanding these requirements has produced a flowmeter with superior durability in the unique applications found in that industry. An all 316SS construction (including rotor) coupled with a unique two piece design which eliminates the need for internal locking rings to retain the meters internals makes for a truly cleanable, hygienic design that also provides exceptional performance.

Non-magnetic sensing of the 316SS rotor eliminates the drag other magnetically sensed rotors experience which provides for better metering accuracy and greater longevity. The HM can handle aggressive products such as acids, vinegar solutions, brine, and de-ionized water.

Complete specifications and ordering information are available on the reverse. For more information please visit our Web Site at www.anderson-negele.com, or contact your local Authorized Anderson-Negele Distributor.



Authorizations



Features

- Durable stainless steel shaft and rulon sleeve bearing eliminates frequent rebuilding and reduces maintenance
- All 316 stainless steel construction, including rotor
- Two piece design allows for easy access to internals for inspection
- 3-A compliant; Third party verified in accordance with standard 28-03

Applications

- Water
- Vinegar
- Light Oils
- Beer
- Alcohols
- Brine Solutions
- Filtered Wine
- De-ionized Water
- CIP Solution
- Clear Juices



Specifications

Connections: Sanitary Clamp Connections
 Construction: Body - 316 Stainless Steel
 Rotor - 316 Stainless Steel (optional 17/4 PH)
 Sleeve Bearing - Rulon 123
 Gasket - Silicone Rubber

Maximum Product Temperature: 250°F(120°C)
 Maximum Inlet Pressure: 115psi / 7.9 bar
 Maximum Product Viscosity: 100 cps
 Power Supply: 9-30 VDC
 Signal Output: 10-22 VDC
 Accuracy: ± 0.50% Over Entire Flow Range
 Repeatability: ± 0.10%

Flow Rates:

HM-075	5-17	GPM
HM-100	7-70	GPM
HM-150	13-130	GPM
HM-200	25-250	GPM

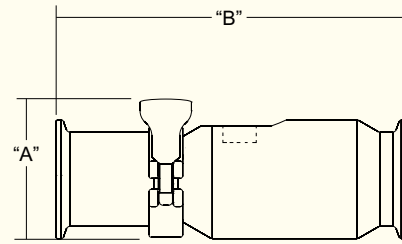


FIG. 1 - SIDE VIEW

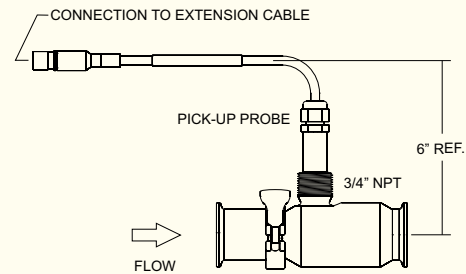
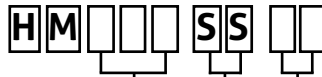


FIG. 2 - SIDE VIEW with PROBE ASSEMBLY

DIMENSIONS:

MODEL	Dim "A"	Dim "B"	FITTING
HM-075 HM-100	2.88	5.88	1" T.C.
HM-150	3.25	6.13	1 1/2" T.C.
HM-200	3.75	8.63	2" T.C.

Order Information



SIZE
 075 3/4" Turbine flowmeter
 100 1" Turbine flowmeter
 150 1 1/2" Turbine flowmeter
 200 2" Turbine flowmeter

ROTOR OPTIONS
 SS 316 stainless steel rotor

HOUSING OPTIONS
 00 Standard housing
 PT 3/4" NPT threaded adapter for explosion proof applications

PROBE/DISPLAY OPTION



OUTPUT OPTIONS
 TS1 3-wire signal probe
 T75 2-wire signal probe
 SDT 3-wire signal probe
 RTI Integral battery operated totalizer
 RTR Remote battery operated totalizer (with 15' extension cable)
 RTX Integral explosion proof battery operated rate totalizer
 RIX Integral explosion proof battery operated rate/totalizer with 4-20mA output
 FIX Integral explosion proof frequency to analog converter

Replacement Parts

Part Number	Description
HTS1000	3-wire pick-up probe
HT75000	2-wire pick-up probe
HSDT000	3-wire pick-up probe
HM600-075SS	3/4" Rebuild kit 316 SS rotor
HM600-100SS	1" Rebuild kit 316 SS rotor
HM600-150SS	1.5" Rebuild kit 316 SS rotor
HM600-200SS	2" Rebuild kit 316 SS rotor

CABLE

000	No	cable (for RTI, RTR and RTX options above)
025	25'	cable
050	50'	cable
075	75'	cable
100	100'	cable