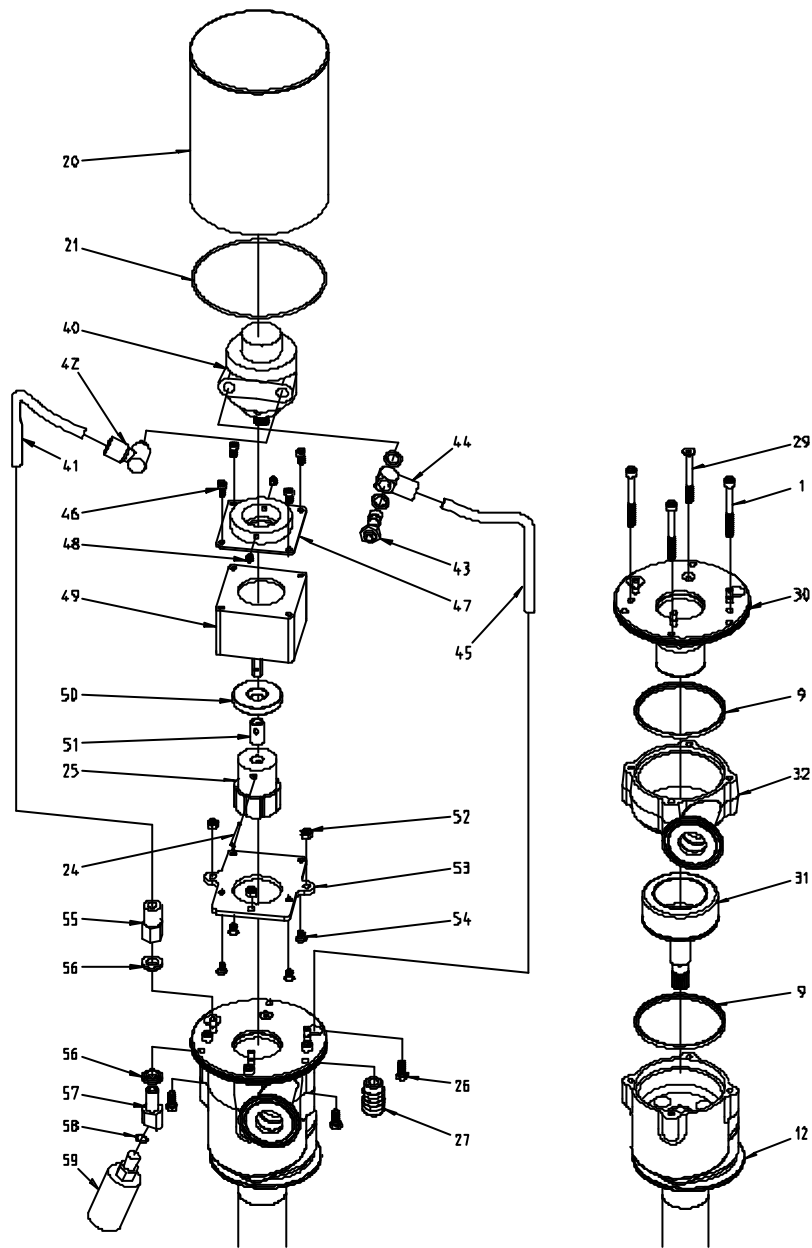


Exploded View Drawing, Toftejorg SaniJet 20A, Air Driven



Reference List of Parts, Toftejorg SaniJet 20A, Air Driven

Pos.	Ref. no.	No/ Unit	Description	Material	Remarks
1	TE51A146	3	Screw	A4-70	Spare part
9	TE20B516	2	Gasket	EPDM	Wear part
	TE20B516-01	2	Gasket	Viton	Wear part
	TE20C516	2	Gasket	Perflour	Wear part
12	TE20B309	1	Base unit, L = 350 mm	Assy	
	TE20B300	1	Base unit, L = 500 mm	Assy	
	TE20B301	1	Base unit, L = 700 mm	Assy	
	TE20B302	1	Base unit, L = 1000 mm	Assy	
	TE20B303	1	Base unit, L = 1200 mm	Assy	
	TE20B304	1	Base unit, L = 1500 mm	Assy	
	TE20B309-01	1	Base unit, L = 350 mm	Assy, Viton	
	TE20B300-01	1	Base unit, L = 500 mm	Assy, Viton	
	TE20B301-01	1	Base unit, L = 700 mm	Assy, Viton	
	TE20B302-01	1	Base unit, L = 1000 mm	Assy, Viton	
	TE20B303-01	1	Base unit, L = 1200 mm	Assy, Viton	
	TE20B304-01	1	Base unit, L = 1500 mm	Assy, Viton	
	12.1	TE51A172	3	Screw	A4
12.2	TE20B594	1	Bracket	AISI 304	Spare part
12.3	TE20B642	1	Plug	AISI 316L	Spare part
12.4	TE51T127	1	O-ring	EPDM	Wear part
	TE51T008	1	O-ring	Viton	Wear part
	TE51T129	1	O-ring	Perflour	Wear part
12.5	TE20B500	1	Base housing	AISI 316L	Spare part
12.6	TE20B512	1	Retaining screw	A4	Spare part
12.7	TE20B511	1	Plain seal	EPDM	Wear part
	TE20B511-01	1	Plain seal	Viton	Wear part
	TE20C511	1	Plain seal	Perflour	Wear part
12.8	TE20B538	1	Inner shaft, L = 350 mm	AISI 316L	Spare part
	TE20B532	1	Inner shaft, L = 500 mm	AISI 316L	Spare part
	TE20B533	1	Inner shaft, L = 700 mm	AISI 316L	Spare part
	TE20B534	1	Inner shaft, L = 1000 mm	AISI 316L	Spare part
	TE20B535	1	Inner shaft, L = 1200 mm	AISI 316L	Spare part
12.9	TE20B536	1	Inner shaft, L = 1500 mm	AISI 316L	Spare part
	TE20B510	1	Bearing ring	PEEK 450G	Wear part
12.10	TE20B310	1	Outer tube, L = 350 mm	AISI 316L	Spare part
	TE20B311	1	Outer tube, L = 500 mm	AISI 316L	Spare part
12.11	TE20B312	1	Outer tube, L = 700 mm	AISI 316L	Spare part
	TE20B313	1	Outer tube, L = 1000 mm	AISI 316L	Spare part
	TE20B314	1	Outer tube, L = 1200 mm	AISI 316L	Spare part
	TE20B315	1	Outer tube, L = 1500 mm	AISI 316L	Spare part
	12.12	TE20B540	1	Ball race	SAF 2205
12.12	TE20B360	1	Ball ring	ECTFE/AISI 316	Wear part
12.13	TE20B542	1	Bevel gear	SAF 2205	Wear part
12.14	TE20B513	1	Bearing bush	PEEK 450G	Wear part

Reference List of Parts, Toftejorg Sanijet 20A, Air Driven

Pos.	Ref. no.	No./ Unit	Description	Material	Remarks
12.15	TE20B514	1	Bearing bush	PEEK 450G	Wear part
13	TE20B553	1	Seal ring H	EDPM	Wear part
	TE20B553-01	1	Seal ring H	Viton	Wear part
	TE20C553	1	Seal ring H	Perflour	Wear part
14	TE20B324	1	Cleaner unit, 2xø2.0mm	Assy	
	TE20B325	1	Cleaner unit, 2xø3.8mm	Assy	
	TE20B326	1	Cleaner unit, 4xø4.2mm	Assy	
14.1	TE51C003	1	Pin	A4	Spare part
14.2	TE20B571	1	Clip ring	AISI 316L	Spare part
14.3	TE20B334	1	Cleaner head 2xø2.0mm	AISI 316L	Spare part
	TE20B335	1	Cleaner head 2xø3.8mm	AISI 316L	Spare part
	TE20B336	1	Cleaner head 4xø4.2mm	AISI 316L	Spare part
14.4	TE20B554	1	Bearing bush	PEEK 450G	Wear part
14.5	TE20B552	1	Retaining ring	AISI 316L	Wear part
14.6	TE20B361	1	Ball ring N	ECTFE/AISI 316	Wear part
14.7	TE20B550	1	Bevel gear	AISI 316L	Wear part
20	TE20B347	1	Motor cover	AISI 304	Spare part
21	TE51T125	1	O-ring	EPDM	Spare part
24	TE51C052	1	Tubular rivet	A2	Spare part
25	TE20B343	1	Rotor inner w. magnets	RSt37-2K/Neodymium	Spare part
26	TE51A189	3	Screw	A4	Spare part
27	TE51U310	1	Metal cable gland	Brass, Nickel-pl.	Spare part
29	TE51A057	1	Screw	A4-70	Spare part
30	TE20B345	1	Motor flange welded A	AISI 316L	Spare part
31	TE20B340	1	Rotor outer complete	AISI 316/Neodymium	Spare part
32	TE20B351	1	Inlet housing 1" Tri-clamp	AISI 316L	Spare part
40	TE20B390	1	Air motor	Assy.	
41	TE51U305	230mm	Air tubing	PU	Spare part
42	TE51U388	1	Swivel push-in elbow	Brass, Nickel-pl.	Spare part
43	TE51U008	1	Flow regulator f. banjo fitting	Brass, Nickel-pl.	Spare part
44	TE51U384	1	Banjo fitting, push-in	Brass, Nickel-pl.	Spare part
45	(TE51U305)	0	Air tubing	PU - Customer Supply	Spare part
46	TE51A098	4	Screw	A4	Spare part
47	TE20B637	1	Connector flange	AISI 304	Spare part
48	TE51A018	2	Pointed screw	A4	Spare part
49	TE20B636	1	Gear box 1:100 f. Air motor	Assy.	
50	TE20B633	1	Guide ring	AISI 304	Spare part
51	TE20B631	1	Bush f. Rotor Air motor	AISI 304	Spare part
52	TE51A504	3	Nut	A4	Spare part
53	TE20B634	1	Flange for gear	AISI 304	Spare part
54	TE51A049	4	Screw	A4	Spare part
55	TE51U387	1	Straight connector, push-in	Brass, Nickel-pl.	Spare part
56	TE20B645	2	Seal ring	POM - black	Spare part
57	TE20B644	1	Adapter f. Silencer	AISI 304	Spare part
58	TE51T041	1	O-ring	NBR	Spare part
59	(TE51U005)	1	Silencer incl. in Air motor		Spare part

Standard Wear Part Kit in **Viton** for Toftejorg SaniJet 20 motor driven version
 (electrical/air)

Article no. TE20B294

Reference no.	No.	Description	Pos. no.
TE20B510	1	Bearing ring, top	12.9
TE20B513	1	Bearing bush D1	12.14
TE20B514	1	Bearing bush D2	12.15
TE20B511-01	1	Plain seal S	12.7
TE20B516-01	2	Gasket D	9
TE20B553-01	1	Seal ring H	13
TE51T008	1	O-ring	12.4

Standard Wear Part Kit in **EPDM** for Toftejorg SaniJet 20 motor driven version
 (electrical/air)

Article no. TE20B295

Reference no.	No.	Description	Pos. no.
TE20B510	1	Bearing ring, top	12.9
TE20B513	1	Bearing bush D1	12.14
TE20B514	1	Bearing bush D2	12.15
TE20B511	1	Plain seal S	12.7
TE20B516	2	Gasket D	9
TE20B553	1	Seal ring H	13
TE51T127	1	O-ring	12.4

Standard Spare Part Kit in **EPDM** for Toftejorg SaniJet 20

Article no. TE20B297

Reference no.	No.	Description	Pos. no.
TE20B511	1	Plain seal S	12.7
TE20B516	2	Gasket D	9
TE20B553	1	Seal ring H	13
TE51T127	1	O-ring	12.4

Optional Spare Part Kit in **Viton** for Toftejorg SaniJet 20

Article no. TE20B298

Reference no.	No.	Description	Pos. no.
TE20B511-01	1	Plain seal, Viton	12.7
TE20B516-01	2	Gasket, Viton	9
TE20B553-01	1	Seal ring H, Viton	13
TE51T008	1	O-ring	12.4

Tools

Reference no.	Description
TE462A	Socket Wrench w. pin
TE20B701	Hook spanner