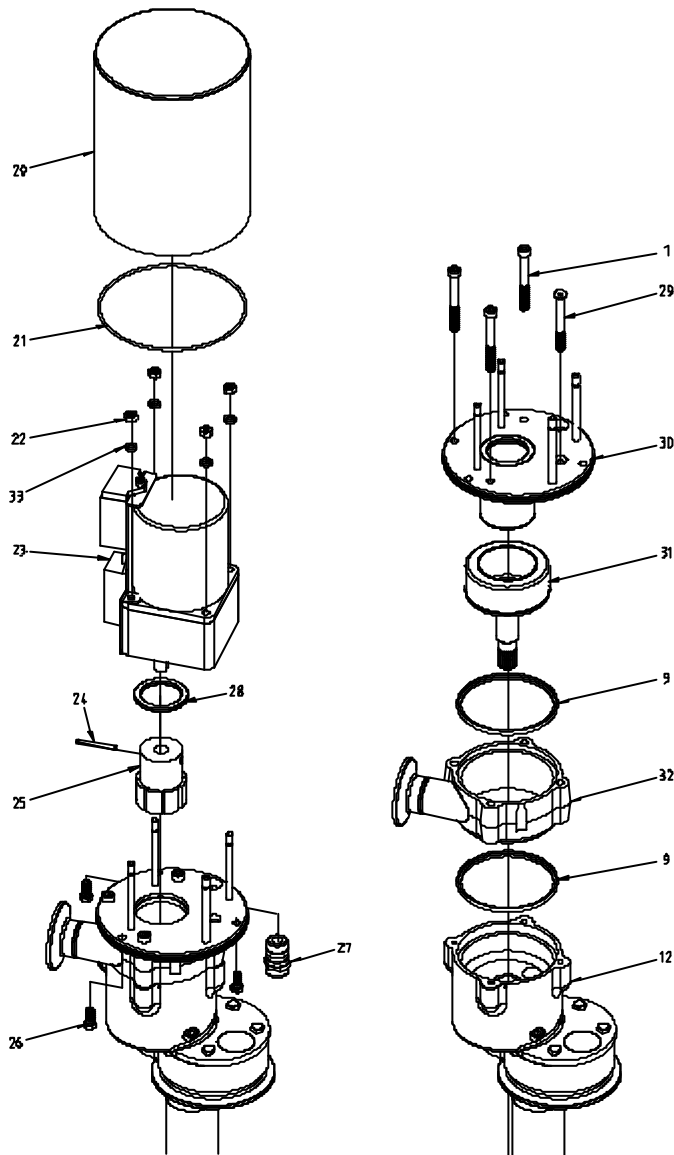


Central States Industrial
2700 Partnership Boulevard
Springfield, MO 65803
800.654.5635
<http://www.csidesigns.com>

Exploded View Drawing, Toftejorg SaniJet 20E, Electrically Driven



Central States Industrial
 2700 Partnership Boulevard
 Springfield, MO 65803
 800.654.5635
<http://www.csidesigns.com>

Reference List of Parts, Toftejorg SaniJet 20E, Electrically Driven

Pos.	Ref. no.	No/ Unit	Description	Material	Remarks
1	TE51A146	3	Screw	A4-70	Spare part
9	TE20B516	2	Gasket	EPDM	Wear part
	TE20B516-01	2	Gasket	Viton	Wear part
	TE20C516	2	Gasket	Perflour	Wear part
12	TE20B309	1	Base unit, L = 350 mm	Assy	
	TE20B300	1	Base unit, L = 500 mm	Assy	
	TE20B301	1	Base unit, L = 700 mm	Assy	
	TE20B302	1	Base unit, L = 1000 mm	Assy	
	TE20B303	1	Base unit, L = 1200 mm	Assy	
	TE20B304	1	Base unit, L = 1500 mm	Assy	
	TE20B309-01	1	Base unit, L = 350 mm	Assy, Viton	
	TE20B300-01	1	Base unit, L = 500 mm	Assy, Viton	
	TE20B301-01	1	Base unit, L = 700 mm	Assy, Viton	
	TE20B302-01	1	Base unit, L = 1000 mm	Assy, Viton	
	TE20B303-01	1	Base unit, L = 1200 mm	Assy, Viton	
	TE20B304-01	1	Base unit, L = 1500 mm	Assy, Viton	
12.1	TE51A172	3	Screw	A4	Spare part
12.2	TE20B594	1	Bracket	AISI 304	Spare part
12.3	TE20B642	1	Plug	AISI 316L	Spare part
12.4	TE51T127	1	O-ring	EPDM	Wear part
	TE51T008	1	O-ring	Viton	Wear part
	TE51T129	1	O-ring	Perflour	Wear part
12.5	TE20B500	1	Base housing	AISI 316L	Spare part
12.6	TE20B512	1	Retaining screw	A4	Spare part
12.7	TE20B511	1	Plain seal	EPDM	Wear part
	TE20B511-01	1	Plain seal	Viton	Wear part
	TE20C511	1	Plain seal	Perflour	Wear part
12.8	TE20B538	1	Inner shaft, L = 350 mm	AISI 316L	Spare part
	TE20B532	1	Inner shaft, L = 500 mm	AISI 316L	Spare part
	TE20B533	1	Inner shaft, L = 700 mm	AISI 316L	Spare part
	TE20B534	1	Inner shaft, L = 1000 mm	AISI 316L	Spare part
	TE20B535	1	Inner shaft, L = 1200 mm	AISI 316L	Spare part
	TE20B536	1	Inner shaft, L = 1500 mm	AISI 316L	Spare part
12.9	TE20B510	1	Bearing ring	PEEK 450G	Wear part
12.10	TE20B310	1	Outer tube, L = 350 mm	AISI 316L	Spare part
	TE20B311	1	Outer tube, L = 500 mm	AISI 316L	Spare part
	TE20B312	1	Outer tube, L = 700 mm	AISI 316L	Spare part
	TE20B313	1	Outer tube, L = 1000 mm	AISI 316L	Spare part
	TE20B314	1	Outer tube, L = 1200 mm	AISI 316L	Spare part
	TE20B315	1	Outer tube, L = 1500 mm	AISI 316L	Spare part

Central States Industrial
 2700 Partnership Boulevard
 Springfield, MO 65803
 800.654.5635
<http://www.csidesigns.com>

Reference List of Parts, Toftejorg SaniJet 20E, Electrically Driven

Pos.	Ref. no.	No/ Unit	Description	Material	Remarks
12.11	TE20B540	1	Ball race	SAF 2205	Wear part
12.12	TE20B360	1	Ball ring	ECTFE/AISI 316	Wear part
12.13.	TE20B542	1	Bevel gear	SAF 2205	Wear part
12.14	TE20B513	1	Bearing bush	PEEK 450G	Wear part
12.15	TE20B514	1	Bearing bush	PEEK 450G	Wear part
13	TE20B553	1	Seal ring H	EPDM	Wear part
	TE20B553-01	1	Seal ring H	Viton	Wear part
	TE20C553	1	Seal ring H	Perflour	Wear part
14	TE20B324	1	Cleaner unit, 2xø2.0mm	Assy	
	TE20B325	1	Cleaner unit, 2xø3.8mm	Assy	
	TE20B326	1	Cleaner unit, 4xø4.2mm	Assy	
14.1	TE51C003	1	Pin	A4	Spare part
14.2	TE20B571	1	Clip ring	AISI 316L	Spare part
14.3	TE20B334	1	Cleaner head 2xø2.0mm	AISI 316L	Spare part
	TE20B335	1	Cleaner head 2xø3.8mm	AISI 316L	Spare part
	TE20B336	1	Cleaner head 4xø4.2mm	AISI 316L	Spare part
	TE20B336	1	Cleaner head 4xø4.2mm	AISI 316L	Spare part
14.4	TE20B554	1	Bearing bush	PEEK 450G	Wear part
14.5	TE20B552	1	Retaining ring	AISI 316L	Wear part
14.6	TE20B361	1	Ball ring N	ECTFE/AISI 316	Wear part
14.7	TE20B550	1	Bevel gear	AISI 316L	Wear part
20	TE20B347	1	Motor cover	AISI 304	Spare part
21	TE51T125	1	O-ring	EPDM	Spare part
22	TE51A504	4	Nut	A4	Spare part
23	TE20B380	1	El-gear motor (1:36) 220-230V	Assy	
	TE20B380-01	1	El-gear motor (1:36) 200V	Assy	
	TE20B380-02	1	El-gear motor (1:36) 110-115V	Assy.	
	TE20B380-03	1	El-gear motor (1:36) 100V	Assy.	
	TE20B381	1	El-gear motor (1:75) 220-230V	Assy.	
	TE20B381-01	1	El-gear motor (1:75) 200V	Assy.	
	TE20B381-02	1	El-gear motor (1:75) 110-115V	Assy.	
	TE20B381-03	1	El-gear motor (1:75) 100V	Assy.	
24	TE51C052	1	Tubular rivet, DIN 1481	A2	Spare part
25	TE20B343	1	Rotor inner w. magnets	Assy.	
26	TE51A189	3	Screw	A4	Spare part
27	TE51U310	1	Union joint, PG9	MS, nickeled	Spare part
28	TE20B630	1	Guide ring	AISI 304	Spare part
29	TE51A057	1	Screw	A4-70	Spare part
30	TE20B344	1	Motor flange welded E	AISI 316L	Spare part
31	TE20B340	1	Rotor outer w. magnets	Assy.	
32	TE20B351	1	Inlet housing 1" Tri-clamp	AISI 316L	Spare part
33	TE51B039	4	Washer	A4-70	Spare part

Central States Industrial
 2700 Partnership Boulevard
 Springfield, MO 65803
 800.654.5635
<http://www.csidesigns.com>

**Standard Wear Part Kit in Viton for Toftejorg SaniJet 20 motor driven version
 (electrical/air)**

Article no. TE20B294

Reference no.	No.	Description	Pos. no.
TE20B510	1	Bearing ring, top	12.9
TE20B513	1	Bearing bush D1	12.14
TE20B514	1	Bearing bush D2	12.15
TE20B511-01	1	Plain seal S	12.7
TE20B516-01	2	Gasket D	9
TE20B553-01	1	Seal ring H	13
TE51T008	1	O-ring	12.4

**Standard Wear Part Kit in EPDM for Toftejorg SaniJet 20 motor driven version
 (electrical/air)**

Article no. TE20B295

Reference no.	No.	Description	Pos. no.
TE20B510	1	Bearing ring, top	12.9
TE20B513	1	Bearing bush D1	12.14
TE20B514	1	Bearing bush D2	12.15
TE20B511	1	Plain seal S	12.7
TE20B516	2	Gasket D	9
TE20B553	1	Seal ring H	13
TE51T127	1	O-ring	12.4

Standard Spare Part Kit in EPDM for Toftejorg SaniJet 20 (all versions)

Article no. TE20B297

Reference no.	No.	Description	Pos. no.
TE20B511	1	Plain seal S	12.7
TE20B516	2	Gasket D	9
TE20B553	1	Seal ring H	13
TE51T127	1	O-ring	12.4

Optional Spare Part Kit in Viton for Toftejorg SaniJet 20 (all versions)

Article no. TE20B298

Reference no.	No.	Description	Pos. no.
TE20B511-01	1	Plain seal, Viton	12.7
TE20B516-01	2	Gasket, Viton	9
TE20B553-01	1	Seal ring H, Viton	13
TE51T008	1	O-ring	12.4

Tools

Reference no.	Description
TE462A	8mm Socket Wrench w. pin
TE20B701	Hook spanner