



800.654.5635 • www.csidesigns.com

## Sanitary, Low-Flow Cleaning

### Toftejorg SaniMagnum Rotary Spray Head

PD 66398 GB1 2003-08

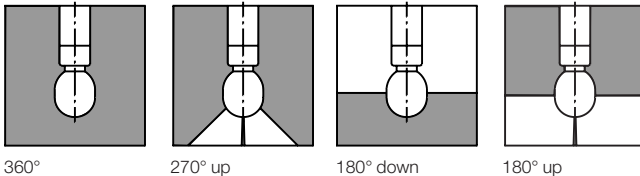
#### Application

The Toftejorg SaniMagnum is an efficient replacement for traditional static spray balls as it uses low volumes of liquid at low pressure. The device, particularly well-suited to sanitary applications, can be used in tanks ranging from 5 m<sup>3</sup> to 50 m<sup>3</sup> (1,300 to 13,000 US gallons). Application and optimal positioning assistance is available in CAD format.

#### Working Principle

The flow of the cleaning media causes the head of the Toftejorg SaniMagnum to rotate, with fan jets laying out a swirling pattern throughout the vessel. This generates a vibrating impact and cascading flow that covers all internal surfaces of the tank or reactor. The device's self-cleaning feature is achieved by directing the cleaning media through the rotating bearing track and onto the neck of the elongated head.

#### Spray Pattern



#### Standard Design

As standard documentation, the Toftejorg SaniMagnum can be supplied with a "Declaration of Conformity" for material specifications or 3.1.B certification for metallic parts. The device is available in hastelloy C22 (balls in hastelloy C276/PTFE) with 3.1.B certification for metallic parts.

#### Materials

Inlet connections: 1.4404 (316L)  
Bearing race parts: SAF 2205 (UNS31803)  
Balls: 1.4401 (316)/PTFE\*  
Head: 1.4404 (316L)  
(\*FDA approved 21 CFR § 177.1550)

#### Technical Data

Weight: Thread and clip-on: 0.76 kg (1.48 lbs)  
On pipe: 0.97/1.52 kg (2.14/3.35 lbs)  
Lubricant: Self-lubricating with the cleaning fluid



Working pressure: 1 - 3 bar (14.5 - 44 psi)  
Recommended pressure: 2 bar (29 psi)  
Max. working temperature: 95 °C (203 °F)  
Max. ambient temperature: 140 °C (284 °F)  
Wetting radius: Max. 3 m (10 ft)  
Impact cleaning radius: Max. effective 2 m (6 ft)  
Connection: 1 1/4" BSP or NPT thread.  
Clip-on or weld-on for pipe: ISO2037, ASTM A270, BS4825 part 1 or DIN 11.850

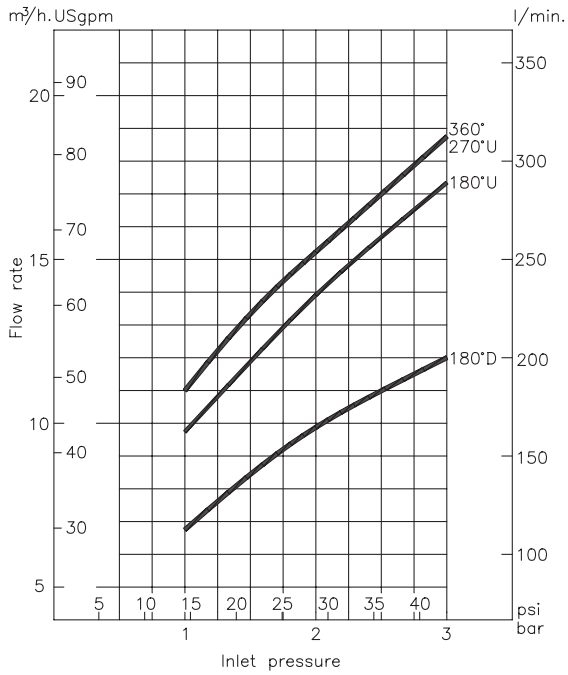
#### Ordering

Please specify desired spray pattern, required connections, material selection and type of certification required. Please also confirm the application suitability.

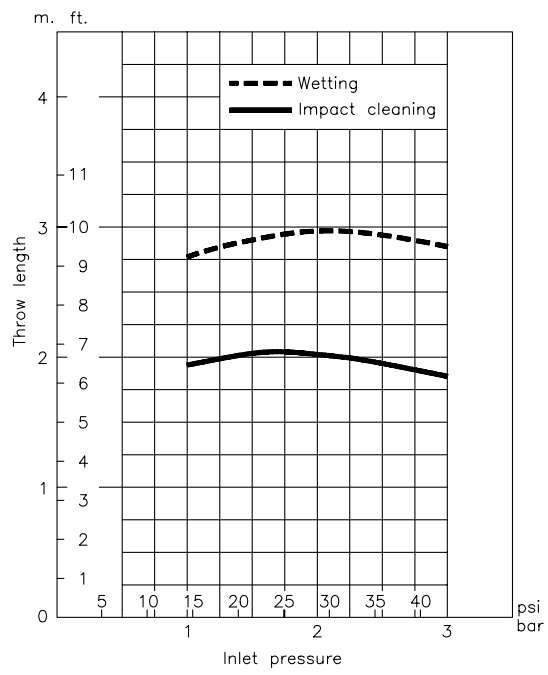
#### Options

- Downpipes with Tri-Clamp and flange connections
- Electropolishing

### Flow Rate

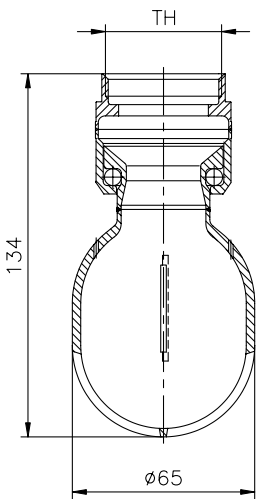


### Cleaning Radius

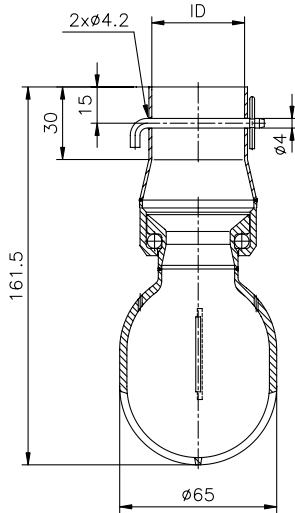


For clip-on models, the flow rate is increased by approx 0.5 m<sup>3</sup>/h.

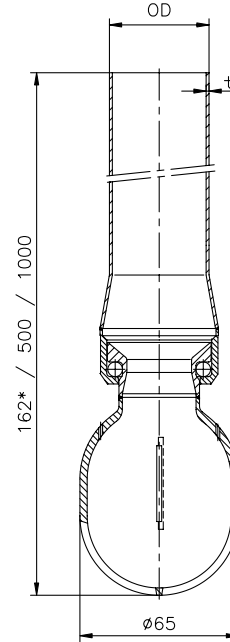
### Dimensions (mm)



### Clip-on



### Welded on pipe



#### TH

1/4" BSP  
1/4" NPT

#### ID

1 1/2"	$\phi 38.4$
2"	$\phi 51.3$
NW40	$\phi 40.4$
NW40	$\phi 41.4$

#### OD x t

<b>Welded on pipe</b>	
1 1/2"	$\phi 38 \times 1.2$
<b>Weld end*</b>	
1 1/2"	$\phi 38 \times 1.2$
NW40	$\phi 41 \times 1.5$

PD 66398 GB1 2003-08

The information contained herein is correct at the time of issue, but may be subject to change without prior notice.

#### How to contact Alfa Laval

Contact details for all countries are continually updated on our website. Please visit [www.alfalaval.com](http://www.alfalaval.com) or [www.toftejorg.com](http://www.toftejorg.com) to access the information direct.



800.654.5635  
[www.csidesigns.com](http://www.csidesigns.com)