

transfer.

The True Evolution of Mixproof Valve Technology

The beginning of Mixproof technology can be traced to one goal—the need for system automation. The goal is to provide product consistency and further protect the product while increasing production. This isn't a new concept; process automation via Mixproof valves has been available since 1980.

Are you still using non-automated, single-seat valve technology? Following is a list of reasons to automate:

- **Guaranteed Repeatability:** Automation is consistency.
- **Improved Product Quality:** Any automated process produces a more consistent product which ensures quality.
- **Operator Safety:** An automated process lowers the risk of accidents and human error.
- **Payback:** All automated processes reduce the amount of equipment and resources, improving the processor's bottom line.

Mixproof valves are the heart of every automated system. Food and dairy process automation is simply not possible without them. Providing the functionality of double block and bleed in a single unit, each valve has two separate housings or flow paths separated by a pair of seats and a vent to atmosphere. This system

of housings and seats allows for product to flow in one housing and CIP solution in the other, without risk of co-mingling. To facilitate true automation, remote-controlled valve "tops" such as Alfa Laval's ThinkTop™ unit were created to tell each valve when to open or close. By simply utilizing Mixproof valves with control tops, processors can achieve a proven automated process.

For the first time, they are now allowing CIP solution to clean one valve seat while product is running in the opposite housing.

In 1996, the FDA issued a memorandum outlining the requirements for the use of Mixproof valves in applications involving milk products vs. cleaning solutions. Later, this memorandum was added to the Pasteurized Milk Ordinance (PMO) under paragraph 15p(B). This was to ensure the hygienic and safe separation of dairy products flowing concurrently through the same valve. In brief, the PMO requires that both valve seats must be position detectable, as well as the leakage chamber (found in all Mixproof valves) must have the same cross-sectional area as the valve body port connections. Finally,

the actuator must be fail safe by spring to close. With slight modifications to the standard Unique Mixproof valve, Alfa Laval created the **Unique PMO Mixproof** valve which fully complies with the PMO.

In 2007, the FDA allowed a significant change to the PMO ordinance for Mixproof valve applications. For the first time, they are now allowing CIP solution to clean one valve seat while product is running in the opposite housing. This monumental change in

continued on page 2



What's Inside

New Member of the Pipetite Family	2
New Standards for Industry	3
CSI at Process Expo	3
Meet Tammy Wiemken	4

The True Evolution of Mixproof Valve Technology

FDA policy virtually eliminates CIP downtime so processors run continuous dairy operations and increase production. Like the evolution of Mixproof valve technology, Alfa Laval has evolved the Unique PMO valve to create the new **Unique PMO Plus™** Mixproof valve. Both the PMO and PMO Plus are so similar that only a few simple changes differentiate the two. As a result, there's no need to learn or take chances on new valve designs. The following benefits make the Unique PMO Plus stand out from the competition:

- **Proven Design:** Same fundamental technology (Unique Mixproof and Unique PMO) already in industry for more than a decade.
- **Retrofittable:** Replacement of a few components enables conversion of installed Unique PMO valves to Unique PMO Plus.
- **Only Three Elastomers in the Isolation Chamber:** Minimizes risk of product contamination.
- **Tested and FDA Compliant to 145 psi:** The highest operating pressure available for the widest range of process applications.
- **Designed with a Mix of Radial and Axial Seals:** A proven, leading design to protect product.
- **Standard, Single Unit Actuator:** Simple operation with fewer moving parts.
- **Same Wetted and Actuator Service Kits as the Unique PMO Valve:** No need to learn or stock new parts.
- **Maintenance Friendly:** No adjustments are required when reassembling the valve after service.

Looking at the Alfa Laval portfolio, processors now have a full range of automation options. For applications not governed by the PMO, our standard Unique Mixproof valve is a solid option. To automate dairy processes, the Unique PMO valve is the best choice if a processor isn't interested in continuous processing capability.

However, if they're looking for continuous dairy processing utilizing a proven Mixproof valve design, the ultimate option is Alfa Laval's Unique PMO Plus valve.

If you already have installed Unique PMO valves, go to "full auto" and upgrade your Unique PMO valves to Unique PMO Plus. With the simple, economical swap of a few components, you're ready to step into the world of continuous processing. Yet another benefit to going with the leader in sanitary valves is the support of a trusted name – Alfa Laval.

With a lot of "revolutionary" and "24/7" processing claims flooding the marketplace, we highly recommend contacting your CSI representative for the truth about Mixproof processing, and what's best for each processing need. As a Master Alfa Laval Distributor, CSI has complete access to Alfa Laval's training and Mixproof valves experts if needed.

Contact CSI at **800.654.5635** or visit www.csidesigns.com.

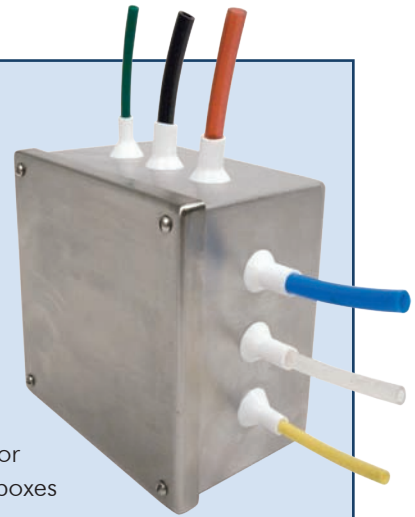
New Member of the Pipetite Family

With their versatility, robust construction and dependability, CSI's popular **Pipetite** products are quickly becoming the preferred solution for effectively sealing pipe and tube penetrations in walls and ceilings. The same quality and design features that have made Pipetite wall boots, sleeve boots and ReBoots so effective are now available for sealing all types of penetrations through panels, boxes or enclosures.

CSI's new **Pipetite Grommets** offer a simple, cost-effective way to provide a positive seal for penetrations in sheet metal, plexiglass or any type of thin panel. They are excellent for electrical cabinets, control panels or any wall with a thickness range from 18 gauge up to 11 gauge (0.048" to 0.120"). The flexible lip seal seats firmly into your pre-drilled hole and creates a dust and watertight seal for air lines, cable, tubing, pipe, or hose.

The grommets are available in two designs to meet all of your sealing requirements. The Standard Grommets are available in five size ranges for applications up to 7" diameter. Each grommet can be easily trimmed to size to fit a wide range of diameters. CSI also offers "Mini" Grommets which come in four sizes to seal pneumatic tubing and hose from 1/4" through 1/2" diameter. The Mini Grommets are **NEMA** rated for Type 4, Type 4X and Type 6 enclosures, making them suitable for virtually all applications.

Like all of the Pipetite products, the complete line of Grommets are constructed of hygienic white silicone, have a temperature rating of 500° F, are totally self-sealing, and resist even the harshest cleaning solutions. For more information about Pipetite Grommets or any of the other Pipetite products, call **Christian Landsperger** at **800.654.5635** extension 113 or visit www.pipetite.us.



New Standards Bring Accountability to Sanitation Industry

As CSI develops partnerships with plant managers, engineers and maintenance managers in food, beverage and dairy plants we make sure to listen to the concerns and issues facing these industries.

Often, feedback includes concerns such as: *hose assemblies kinking around the fitting and in the middle of the hose; a lack of understanding of sanitary hoses and how they fit into a particular application; and, a lack of understanding of 3-A standards for hose assemblies.*

Basically, the concerns come down to sanitation issues. 3-A standards require a hose assembly to provide a full flow with no crevices or cracks to house bacteria. The very real issue is that when purchasing a hose assembly, one component of the assembly—for example, a fitting, connection or specific hose—might meet 3-A criteria, but the total assembly does not meet the standard.

Identifying this potential sanitation problem led to a new partnership with Ace Manufacturing. In August 2007, CSI selected **Ace Manufacturing** as our hose source for the food, beverage, dairy, and pharmaceutical industries. In conjunction with this endeavor, we also opened our authorized 3-A crimp center in Fowler,

California. Now when purchasing a sanitary hose assembly from CSI, our customers can be confident that the assemblies are truly sanitary.

In the past, 3-A was a self-certification process with no real accountability. CSI, along with other manufacturers, helped lead the way in writing new standards for

**Now when purchasing a
sanitary hose assembly from CSI,
our customers can be confident
that the assemblies are
completely and truly sanitary.**

3-A sanitary hose assemblies, which ushered in a time of new accountability within the sanitation industry.

To ensure safety and sanitation, 3-A now has a Third Party Verification Program (TPV). This program requires a 3-A authorized and trained inspector to visit the manufacturer's facility, document their assembly and quality control protocol, and verify the finished product meets current 3-A standards.



Not just helping set the standard, but adhering to it as well, our partner Ace Manufacturing has completed the TPV program. The documentation of this audit is on file with 3-A; and, Ace has, in turn, trained specific CSI personnel. That information is also documented and on file at 3-A.

The result is that CSI's Fowler location is now an authorized 3-A crimp center for sanitary hose assemblies that meets and exceeds 3-A 62-02 sanitary hose assembly standards.

The sanitation industry must take all necessary precautions and be proactive in dealing with sanitation issues. CSI customers can be confident that our sanitary equipment and products will always meet or exceed the criteria set forth by 3-A.

To learn how CSI can provide a hose assembly to match your application, call a CSI representative at **800.654.5635**.

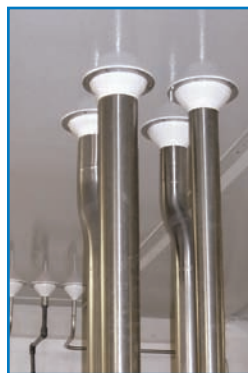
CSI at Process Expo 2008

Tired of wall plates shaking loose?

Sick of wasting money to have them re-installed?

Frustrated with messy and unsightly caulking?

We have the answer: Pipetite. Visit **Booth #14069** at Process Expo and see Pipetite in action. Learn more at www.pipetite.us.



McCormick Place, West Hall
Chicago, Illinois
November 9-13

Thank You

We would like to sincerely thank everyone who participated in our Magic Wand Contest.

The response was phenomenal, and your input was greatly appreciated.

Congratulations to the winners of the iPod Nanos.



2700 N. Partnership Blvd.
Springfield, MO 65803

Prsrt Std
US Postage Pd
Print Group Inc

Visit us online at www.csidesigns.com

CSI Customer Service Rep Full of Surprises

CSI Customer Service Representative **Tammy Wiemken** does more than just take orders from customers. She is also able to answer technical questions and find information that a customer might need about an item. Tammy walks customers through a process to help them find exactly what they need.



Nothing unusual about that, right? Customer service is a top priority at CSI. However, what one might find unusual is Tammy's very diverse background.

With a Bachelor of Arts in philosophy & religion, and minors in music and psychology, one might ask how Tammy wound up at CSI?

"I have 15 years of customer service experience in the industrial field—everything from bearings to hydraulics. This gave me a broad range of knowledge in the industrial world, and made it easy to learn about the sanitary market," she said.

And, about that bachelor's degree? "I go out of my way to work little miracles to make sure the customer gets what they need," Tammy said. "When a customer calls me, they have a need. I try to fix the problem and fill the need as soon as possible."

There are also more surprises behind Tammy, like her competitive spirit. In college she began cross-country and track racing. Today, she is a seasoned marathon runner who has completed ten marathons. Currently she is training for an ultra-marathon, which is 50 kilometers (31 miles). When not outside, she enjoys anything crafty such as sewing, quilting and photography.

So the next time you require assistance, call Tammy at **800.654.5635** extension 119. When you do, know that you are speaking with a CSI representative with a diverse background. Then, be ready for her to "work a little miracle" to help you get what you need.