



# FLANGE ADAPTERS

[www.csidesigns.com](http://www.csidesigns.com) • [www.csidesigns.com](http://www.csidesigns.com) • [www.csidesigns.com](http://www.csidesigns.com)

Transition from  
flanged piping  
systems to sanitary  
tubing systems



- ANSI Class 150 flange x Tri-clamp® or butt-weld tube
- 316L stainless steel
- MTR'S available upon request
- 32 Ra I.D. and mill finish O.D. standard finish
- Other finishes available
- Reducing configurations available
- Custom designs available
- 0.5"- 6" standard sizes

800.654.5635

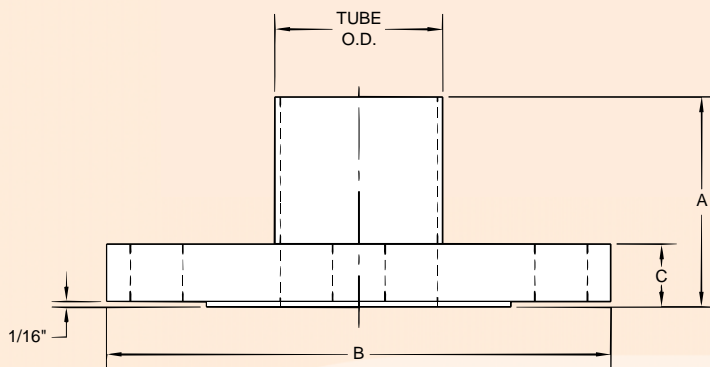




# Flange Adapters



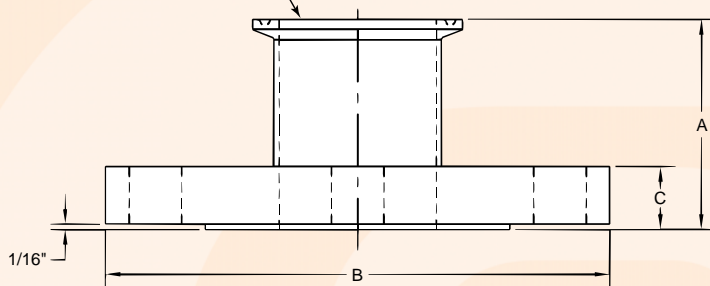
**38BW-FLANGE BY TUBE BUTT-WELD**



SIZE	DIM "A"	DIM "B"	DIM "C"
1/2	1 15/16	3 1/2	7/16
3/4	2	3 7/8	1/2
1	2 1/16	4 1/4	9/16
1 1/2	2 3/16	5	11/16
2	2 1/2	6	3/4
2 1/2	2 5/8	7	7/8
3	2 11/16	7 1/2	15/16
4	2 15/16	9	15/16
6	3 1/2	11	1

Note: When placing an order, specify size and material.  
All dimensions are in inches.

TRI-CLAMP  
FERRULE  
CONNECTION



**38MP-FLANGE BY TRI-CLAMP**

SIZE	DIM "A"	DIM "B"	DIM "C"
1/2	1 3/4	3 1/2	7/16
3/4	1 3/4	3 7/8	1/2
1	1 7/8	4 1/4	9/16
1 1/2	1 7/8	5	11/16
2	2 3/8	6	3/4
2 1/2	2 3/8	7	7/8
3	2 3/8	7 1/2	15/16
4	2 3/8	9	15/16
6	2 3/8	11	1

Note: When placing an order, specify size and material.  
All dimensions are in inches.

\*Reducing configurations available upon request  
\*Flange dimensions conform to ANSI 16.5, Class 150

## FLANGE ADAPTERS BRINGING INNOVATION TO PROCESS SYSTEMS

